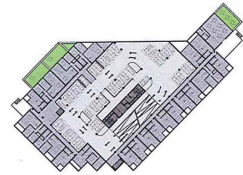


Europäische Kommission **Luxemburg** Stadtzentrum **Bratislava Culenova** Hafen Servicezentrum **Kaohsiung**
Mailänder Platz **Stuttgart** Jäckle-Areal **Villingen-Schwenningen** Musikbildungszentrum **Bad Fredeburg**
Museum der Weltkulturen **Frankfurt** Strandbad **Bad Arolsen** Ges. für Techn. Zusammenarbeit **Eschborn**
Kantinen- u. Konferenzgebäude **Ahrweiler** Expressgutgelände **Freiburg** Mehrzweckhochhaus Uni **Bremen**
Bundesministerium **Berlin** Feuerwehrhaus **Dußlingen** Universitätsplatz Viadrina **Frankfurt (Oder)**

Finalist/Finalist JDS Architects, Brüssel



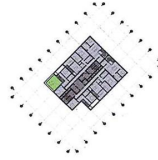
SECTION B M. 1:3.500



HOUSING 01



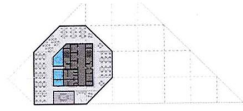
HOUSING 15



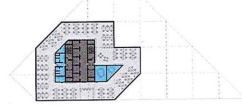
HOUSING 29



2144 m² 8.9 m²/person
OFFICE FLOOR 01



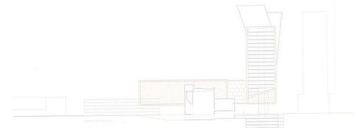
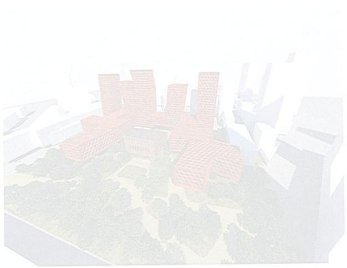
452 m² 7.5 m²/person
OFFICE FLOOR 10



886 m² 4.0 m²/person
OFFICE FLOOR 16



Finalist/Finalist Vallo + Irigaray Architects, E-Pamplona



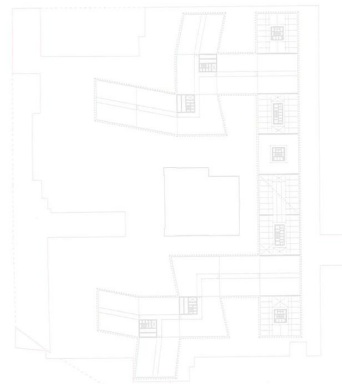
CROSS SECTION SOUTH M. 1:3.500



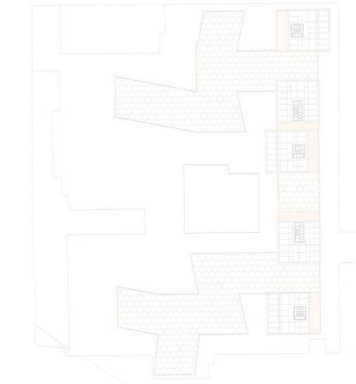
CROSS SECTION NORTH M. 1:3.500



GROUND FLOOR RETAIL + ACCESS M. 1:3.500



MAIN FLOOR OFFICE – HOUSING M. 1:3.500
Floor 1-8



MAIN FLOOR HOUSING 7-25 M. 1:3.500