



portfolio

MY BEST PORTFOLIO
FOR **WORK** &
PRESENTATION

DAMDI

JDS Architects

Julien De Smedt is the founder and director of JDS Architects based in Copenhagen, with offices in Brussels and Oslo. A designer and architect whose work is known in Europe and abroad, Julien's commitment to the exploration of new architectural models and programs has helped to re-energize the discussion of architecture in Denmark with projects such as the VM Housing Complex, Markirre Youth House and Starvanger Concert Hall. Born in Brussels to French art enthusiast Jacques Léobold and Belgian artist Claude De Smedt, Julien attended schools in Brussels, Paris, and Los Angeles before receiving his diploma from the Bartlett School of Architecture. Before founding JDS Architects, Julien worked with OMA, Rotterdam and co-founded in well known architecture firm FLOT in Copenhagen.

www.jdsarchitects.com

JDS JULIEN DE SMEDT ARCHITECTS SELECTED IDEAS 01 → 10

JDS

JULIEN DE SMEDT ARCHITECTS





METHODOLOGY

Through the explanation of one project we wish to exemplify our design method from initial studies through to the finished building and outline how we design buildings that have a sustainable agenda socially, economically and environmentally.

The VM and Mountain Housing, Copenhagen

The VM Houses were commissioned for 23 000 m² of residential program in Copenhagen. It is known as the VM project due to its distinct diagrammatic plan. The project is a direct response to the site and masterplan where we were asked to make a standard carré block building.

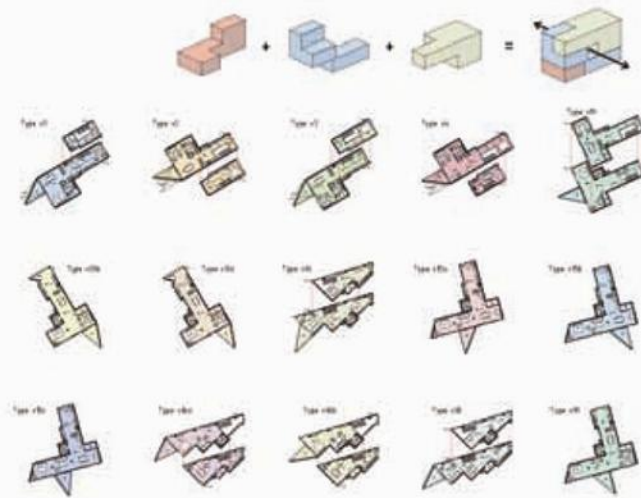
Our proposal is a manipulated perimeter block defined by its four corners but opened internally and along the sides. The vis-a-vis with the neighbor is eliminated by pushing the slab in its center, creating views to the vast open fields around, as well as optimal light and air. All apartments have a double-height space to the north, and wide panoramic views to the south. The logic of the diagonal slab utilized in the V-house is broken down in smaller portions for the M house. In this project the typology of Le Corbusier's Unité d'Habitation is reinterpreted and improved: the central corridors are short and get light from both ends, like bullet holes penetrating through the building.

At ground level there are a series of public areas such as benches, small shops, and a miniature golf course, bringing together the communities who live in the apartments into a socially vibrant setting. All apartments have balconies which connect them to the public life of the outdoors areas.

The construction techniques employed in the projects are very simple with standard bearing walls in prefabricated concrete taking all the load but allowing us to have naturally cross ventilated rooms. Materials are sourced locally in order to bring down the environmental impact of the building and every step has been taken in order to maximise the building not only for the user but also to the client. The building has one of the lowest costs of any project built in Copenhagen at the time: around 1000 €/sqm/m².

The project has 215 apartments with 60 typologies giving a greater social mix. Rather than setting for the market standard, we went beyond the market, and by doing so the developer managed to sell the flats in the first three weeks of presales due to the diversity offered to each inhabitant.

The Mountain building is the 2nd generation of the VM housing project. Same client, same size, same street. The program, however, is 2/3 parking and 1/3 living. Rather than doing two separate buildings next to each other - a parking and a housing block - we decided to merge the two functions into a symbiotic relationship: parking must be connected to the street, housing must have sunlight, fresh air and view. Copenhagen is reclaimed flat land without topography - what if the parking became the foundation of the housing - like a concrete hillside covered by a thin layer of housing, cascading from the 11th to the 1st floor? All apartments have sun-facing roof gardens, amazing views and street parking up to the 10th floor.





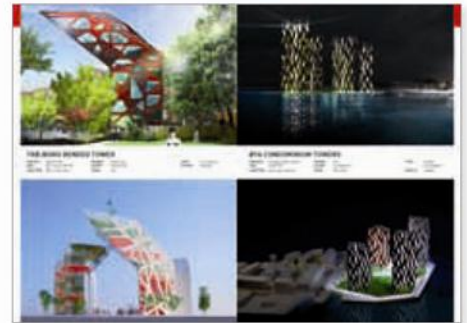
ICEBERG - THE ÅRHUS DOCKLANDS

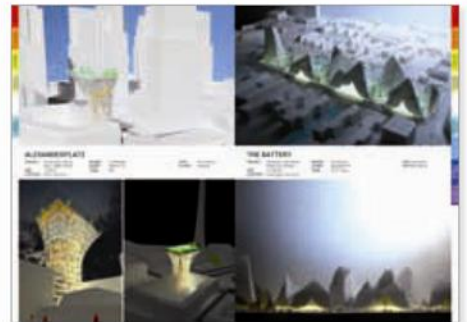
PROJECT: Residential and Mixed-Use Development
SIZE: 21 400 M²
LOCATION: Aarhus, Denmark

BUDGET: 40 000 000 DKK
CLIENT: Tekker-Group, Strandrand Boligforening
TEAMS: JDS, CERRA, Louis Palisard, Sakinh

TYPE: 1st Prize, Invited Competition
STATUS: Ongoing, Completion 2012











SJAKKET YOUTH HOUSE

PROJECT: Community Building,
Youth House
SIZE: 2 000 M²
LOCATION: Copenhagen, Denmark

BUDGET: 3 000 000 EUR
CLIENT: Sjakket, Realdania
TEAM: PLDT, Alicia Hornøyr Birch & Kringsdal

TYPE: 1st Prize, Invited
Competition
STATUS: Completed 2007





HELSINKI PSYCHIATRIC HOSPITAL

Client: City of Helsinki
 Architect: JDS Architects
 Location: Helsinki, Finland
 Year: 2012

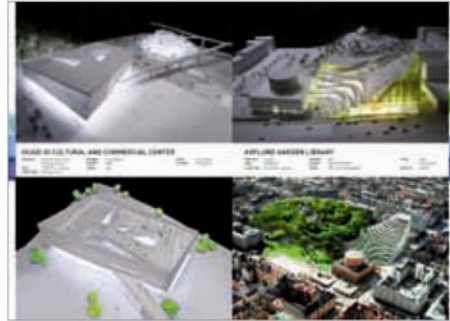


BEIRUT HOUSE OF ARTS AND CULTURE

Client: Ministry of Culture
 Architect: JDS Architects
 Location: Beirut, Lebanon
 Year: 2012

ATOMIUM ELEVATOR

Client: Atomium
 Architect: JDS Architects
 Location: Brussels, Belgium
 Year: 2012



MASDAR CULTURAL AND COMMERCIAL CENTER

Client: Masdar
 Architect: JDS Architects
 Location: Abu Dhabi, UAE
 Year: 2012

ART LINE GARDEN LIBRARY

Client: Masdar
 Architect: JDS Architects
 Location: Abu Dhabi, UAE
 Year: 2012



SUNNINGHILL ART CENTRE

Client: Sunninghill
 Architect: JDS Architects
 Location: Cape Town, South Africa
 Year: 2012



OLD ART CENTER RENOVATION

Client: Old Art Center
 Architect: JDS Architects
 Location: Beirut, Lebanon
 Year: 2012



TAIPEI PERFORMING CENTER

Client: Taipei Performing Center
 Architect: JDS Architects
 Location: Taipei, Taiwan
 Year: 2012

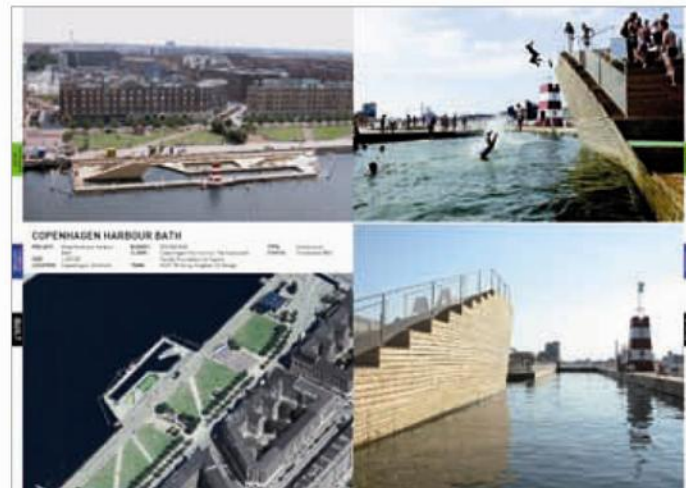
STAMMER CONCERT HALL

Client: Stammer
 Architect: JDS Architects
 Location: Stammer, South Africa
 Year: 2012



SPRING WATER FOUNTAIN

Client: Spring Water Fountain
 Architect: JDS Architects
 Location: Beijing, China
 Year: 2012

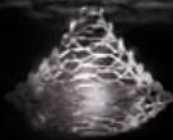


JDS PRODUCTS

A tube of light, consisting of different modules and a lighthead, which can be combined to create an almost infinite variation in height and form. Where vegetation follows the presence or absence of light, so does the light itself by performing in urban situations.

THE ALPHABET streetlight
Perforated stainless steel tube, LED lighting, produced by ERG
www.erg.com

**OUT
SPRING
2010!**



NEW!!!

One material, one method, one royal chandelier!

SPARK chandelier

CNC cut and deformed aluminum, regular dimmable lightsource



Chair for the Hymenkaulen ski jump
SITHOP! chaise longue
750x180x1650mm, Prototyping in
collaboration with Hay www.hay.ch



Big-scale architecture applied on small scale objects. The bowls are composed of equilateral triangles and principles used for big-scale computer modeling. Adding human ergonomics and aesthetics to the equation, a series of vessels have been devised that are carefully crushed for everyday use.

CRUSHED BOWLS ceramic series
Handmade fine bone china, Large version ø 29 cm, Height 16 cm,
Small version ø 16,5 cm, Height 14 cm
Produced by Muuto, www.muuto.com



A carpet rug, shaped to a worldmap which is defined by the boundaries of all currency zones.

WORLD FINANCIAL CRUSH carpet
Hand tufted carpet, 300x250cm



A collapsible chair that folds into a water thin state, simple, robust and timeless.

COLLAPSE folding chair

Prototype, Hinged veneer, 440x440x850mm, Flat pack shipment



A good read in a good seat!
SPLICED chair

Prototype, beaded veneer, 630x950x700mm



The Birdcage is inspired by a typical, classic, found-in-every-home cage. Different though, it has 2 open sides, so birds are free to come and free to fly away. Even more, with fun-roosting and home to feed them it is becoming the bird's home.

THE BIRDCAGE

Welded steel thread, 400x300x300mm



JUNK FOR JOY!

Collector for things that populate our homes and is somewhat scarcely necessary but still, or not really yet, to be thrown away. Things we are attached to, but not to a point that they deserve their own place and display.

JUNKTREE

In house prototyping, CNC cut PMMA,
450x475x550mm
Flat pack shipment



Be specific and generic altogether! A shelving system that is modular and can be reconfigured without any tools.

STACKED shelving

Painted MDF, veneer, 380x380x800mm and derivatives,
metal clips included. Produced by Muuto,
www.muuto.com

**FORUM AID
NOMINATION 2009**