

10X10 / 3

10X10 / 3

100 Architects

10 Critics



LONDON



V&M Houses, København, Denmark, 2002-8. This project, a collaboration between BIG Architects and JDS Architects, consists of two apartment buildings—the V building houses 114 apartments, the M, 59 apartments. By “banding” the buildings into V and M shapes, each unit obtains diagonal views. All apartments have a double-height space to the north and wide panoramic views to the south.



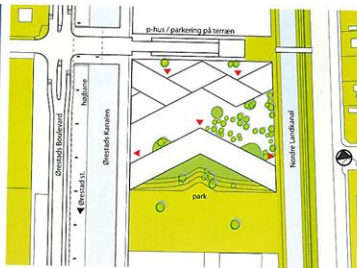
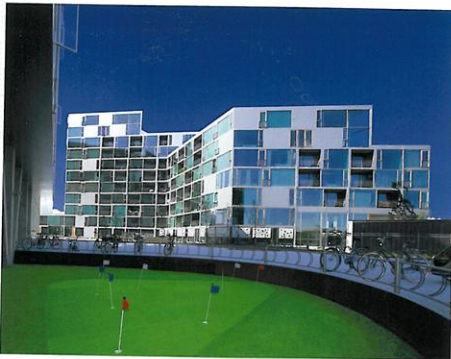
Founded in 2006 by Julien de Smedt—and with offices now in Denmark, Belgium, and Norway—JDS Architects approaches design with a strong affinity for the fantastical. With the majority of its work coming from international competitions, the firm engages in a wide range of projects.

Whether designing small installations or small cities, it displays a madness that seems to disregard not only restraint but reality. But the function of their projects is clear, the spatial quality is interesting, and the construction carefully considered.

One example of JDS Architects' powerful ideas is the Big Brother House (2008–9), designed for the Ordos architectural district in Ordos, Nei Mongol, China. Featuring stacked boxes like containers piled in the desert, it demands very little from its construction, while providing introverted and extroverted spaces circling a central core. The VM Houses in København are another strong idea, accompanied by a bold silhouette. The two buildings are bent to form a "V" and an "M," the chevron shape maximizing inhabitants' views of the surrounding fields. In an attempt to increase these views even further, the balconies become exaggerated extrusions of the floor slab, giving the building a distinctive facade of saw-tooth-like severity.

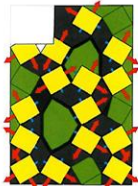
The Architectural Moussaka in Athens bears a strong resemblance to the containers of the Big Brother House. JDS Architects has playfully arranged cubes into designs improved by the varying orientations and by negative and positive space. Unlike the rolled dice the cubes resemble, there is a controlled randomness to this project. The rectilinear volumes show no relationship to grid or order; instead, they begin to frame irregular courtyards and public spaces, which in turn create a connection between reality and fantasy.

JDS Architects is a firm that often attempts to bring fantasy to reality, and its designs have a no-holds-barred, "everything goes" craziness. But their projects also belong to the new trend of an architecture without individual style, in which postmodern knowledge is absorbed and regurgitated, then fused with other historical and artistic influences. // Ai Weiwei





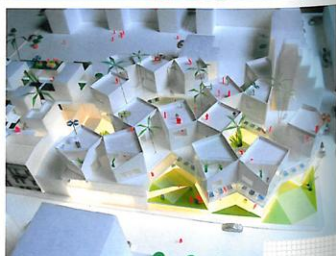
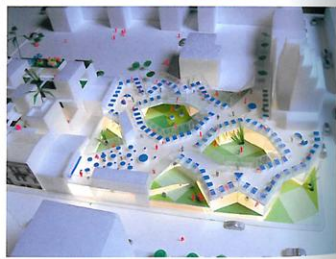
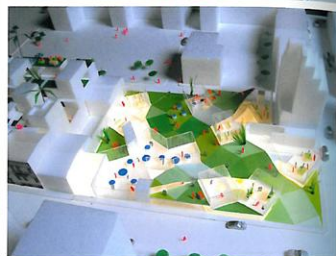
Architectural Mousaka, Athens, Greece, 2007–10. The program for these mixed-use buildings includes parking, commercial spaces, office spaces, and housing. Their angled placement at once maximizes inhabitants' views and privacy. Functions are stacked, starting with a parking garage, then shops and galleries, followed by restaurants and more shops, and on top one floor of offices and two floors of housing. Thirty percent of the site is unbuild land for public use.

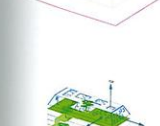
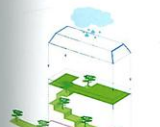
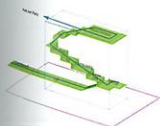
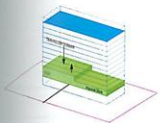


THE HOUSING GRID GIVES EVERY APARTMENT LONG (CONTEXT) AND SHORT (COURTYARD) VIEWS.



WINDOW OPENINGS ARE ANGLED TO OPTIMIZE BETTER VIEW AND TO PROTECT PRIVACY.





MBB1 Housing, Paris, France, 2008. - Set within a developing neighborhood, this student housing contains an inner spiral for social activities and green space, linking the ground floor to the roof terrace. The exterior remains generic—a response to the yet-unknown aesthetic and function of the neighborhood.



JDS Architects