

J S



Julien De Smedt
Architects

Introspection

JDS is a multidisciplinary office that focuses on architecture and design, from large-scale planning to urban furniture. The office is fueled by talented designers, architects, technicians and thinkers that jointly develop projects from early sketches to on-site supervision. All of which, independent of scale, outlines an approach that is affirmatively social in its outcome, enthusiastic in its ambition and rigorous in its process.

We work with municipalities, governments, corporate and private clients to design projects that span the entire programmatic spectrum of the urban condition.

The office has a wide portfolio of international work and a workflow that involves external consultants early on to improve the design intelligence of a given project team. A structure of complimentary teams ensures that a project will not suffer from being too conventional or too naive.

Introduction

Julien De Smedt co-founded his first practice, PLOT, in 2001. In 2006 he founded JDSA Julien De Smedt Architects in Copenhagen and Brussels. The office has since developed projects internationally and opened a branch in Shanghai, China. JDSA's projects cover 40 countries and the office has worked with over 500 collaborators from around the world. JDSA has been awarded 100+ international architecture prizes.

Ecolomy

Economy and ecology need to merge into ecolomy. Ecolomy is a new way of thinking and working with environmental issues. By looking for relationships between systems and sources of energy, we can go beyond the old dialectic of philanthropy versus capitalism.

The heated debate triggered by the “Copenhagen Consensus” - the initiative to put a price tag and a priority on Earth's greatest social and environmental challenges – uncovers a fundamental misunderstanding that pits ecology against economy as good vs. evil. In fact, they are not diametric opposites, but rather two sides of the same coin. Ecological initiatives will only prosper in the real world if they work as viable economic models. We believe that today's environmental problems are not only political, economic or even ecological – they are a design challenge.

Our projects are born from an ingrained value that sustainability goes beyond checklists and keywords. It requires an understanding that local changes affect the global environment, the current context and the construction impact on the environment. Sustainable decisions are incorporated at all stages of our work, from initial workshops, to the design of our models, the selection of material and advice on site. By implementing principles of sustainability at the design stage, optimizing the project risk assessment for the building results in minimal environmental damages.

Collaboration

In today's global market, the ability to form effective and productive collaborations has become a crucial element in attaining a competitive advantage. At JDS, we structure our work method to initiate new forms of collaborative architecture by employing people with diverse backgrounds and engaging in global partnerships.

Sustainability

Sustainable architecture is everywhere and nowhere. Plagued by the promise of endless technological add-ons, co-opted by the precise ambiguity of corporate advertising campaigns, and commodified by the prescribed checklists and codes that masquerade as design philosophy, sustainable design has been rendered impotent, unable to affect the kind of dramatic change necessary to confront the realities of a coordinated energy and climate crisis. However, by combining the best ambitions of architecture inhabitation, use, and beauty with the best ambitions of infrastructure efficiency, scale, and systemization there might exist the potential for a reconceived and re-empowered form of sustainable design.

Two recent projects by JDS Architects, a 1100m tower in Shenzhen, China, and a 44 km² Zero Energy Island Zoo off the coast of South Korea, suggest the possibility of an architecture that is performing at a new scale of perception and influence. One vertical, one horizontal, both big, and both conceived of as infrastructural architecture that simultaneously instigates systemic efficiencies and enables social inhabitation and use.

The Iceberg

PROJECT
Residential Development

SIZE
21 600 m²

BUDGET
243 000 000 DKK (32 600 000 EUR)

SQM PRIZE
1509,25 EUR

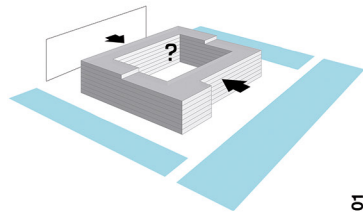
CLIENT
Pension Danmark

COLLABORATORS
CEBRA, SeArch, Louis Paillard

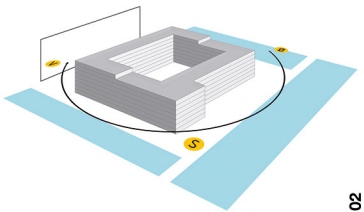
LOCATION
Aarhus, Denmark

STATUS
Completed 2013

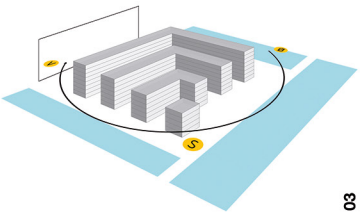
AWARDS
MIPIM AWARD
ARCHITIZER A+ AWARD
BEST BUILDING AWARD 2015 ARCHDAILY



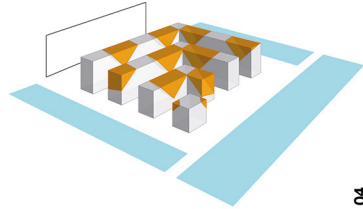
01
BLOCK = NO VIEWS



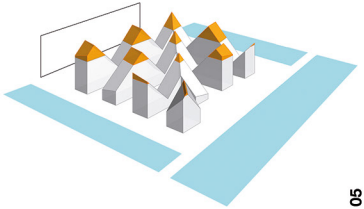
02
SUN ORIENTATION



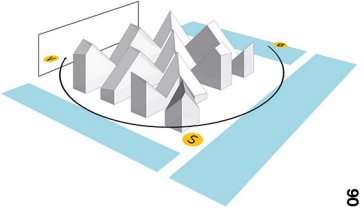
03
BARCELONA



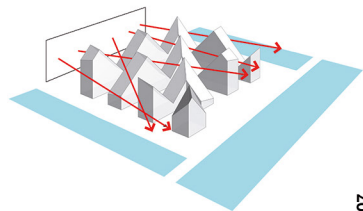
04
VALLEYS



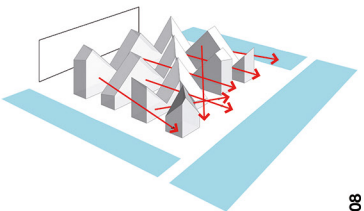
05
PEAKS



06
NEW VOLUMES



07
NEIGHBOUR VIEWS



08
APARTMENT VIEWS

Photography
by Julien Lanoo





Gangnam Gwell Officetel

PROJECT
Gwell Estate Officetel

SIZE
38 000 m² (24 000 m² above ground,
14 000 m² under ground, 700 units)

SQM PRIZE
848,42 EUR

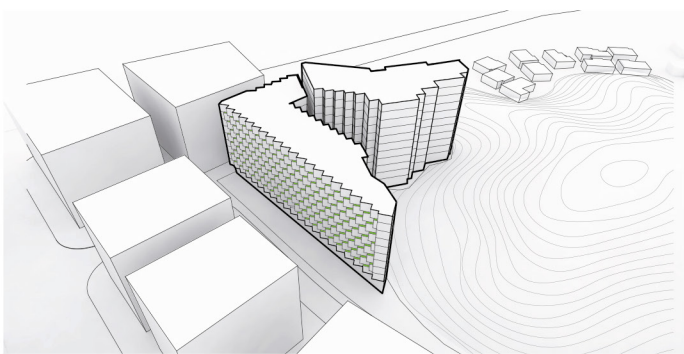
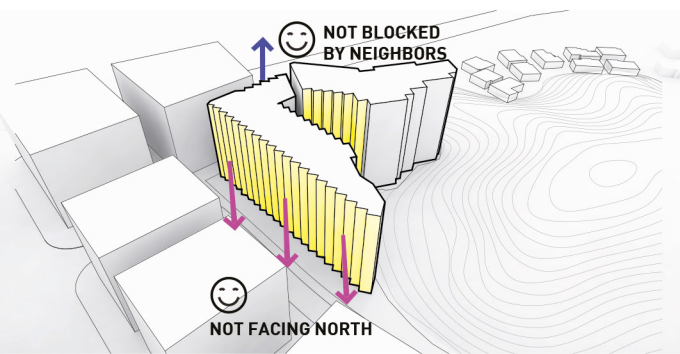
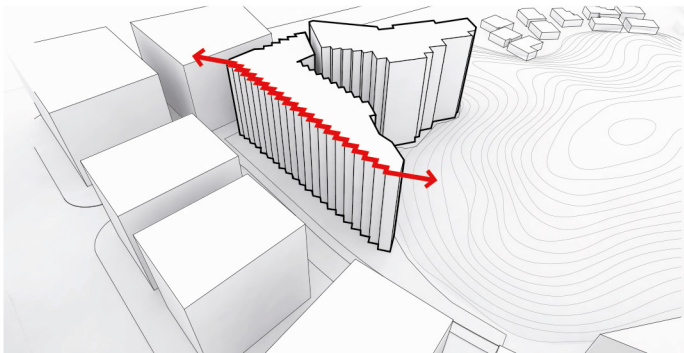
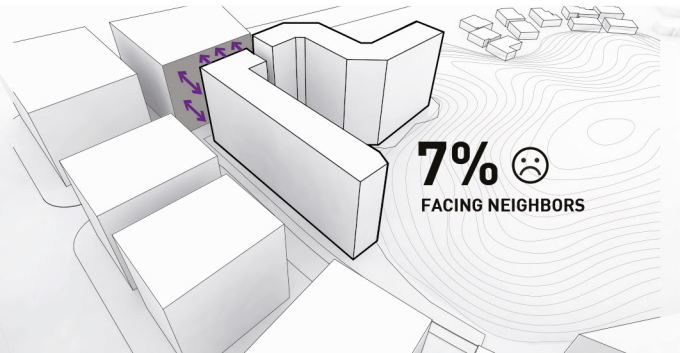
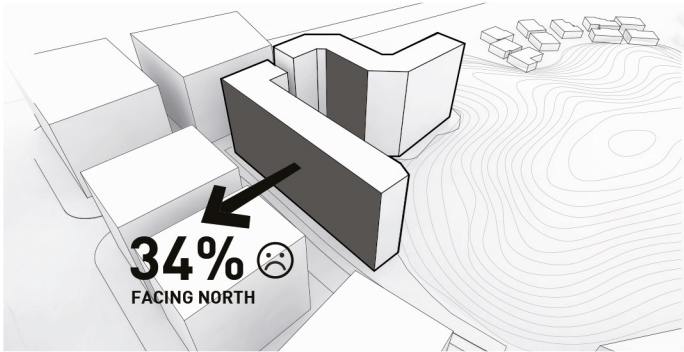
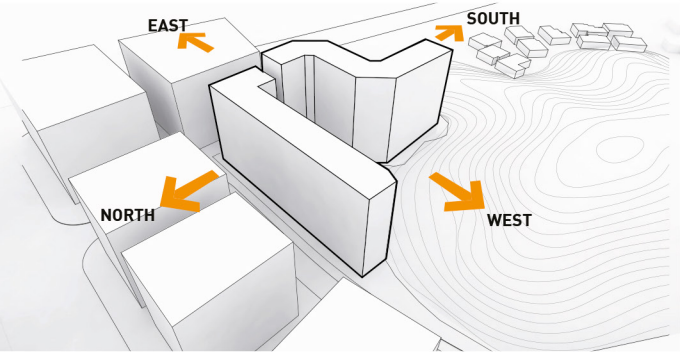
BUDGET
33 000 000 EUR

CLIENT
Shinyoung

COLLABORATORS
Junglim Architects

LOCATION
Seoul, South Korea

STATUS
Completed 2014





VM House

PROJECT
Residential

SIZE
25 000 m², 230 Dwellings

BUDGET
32 500 000 EUR

SQM PRIZE
1300 EUR

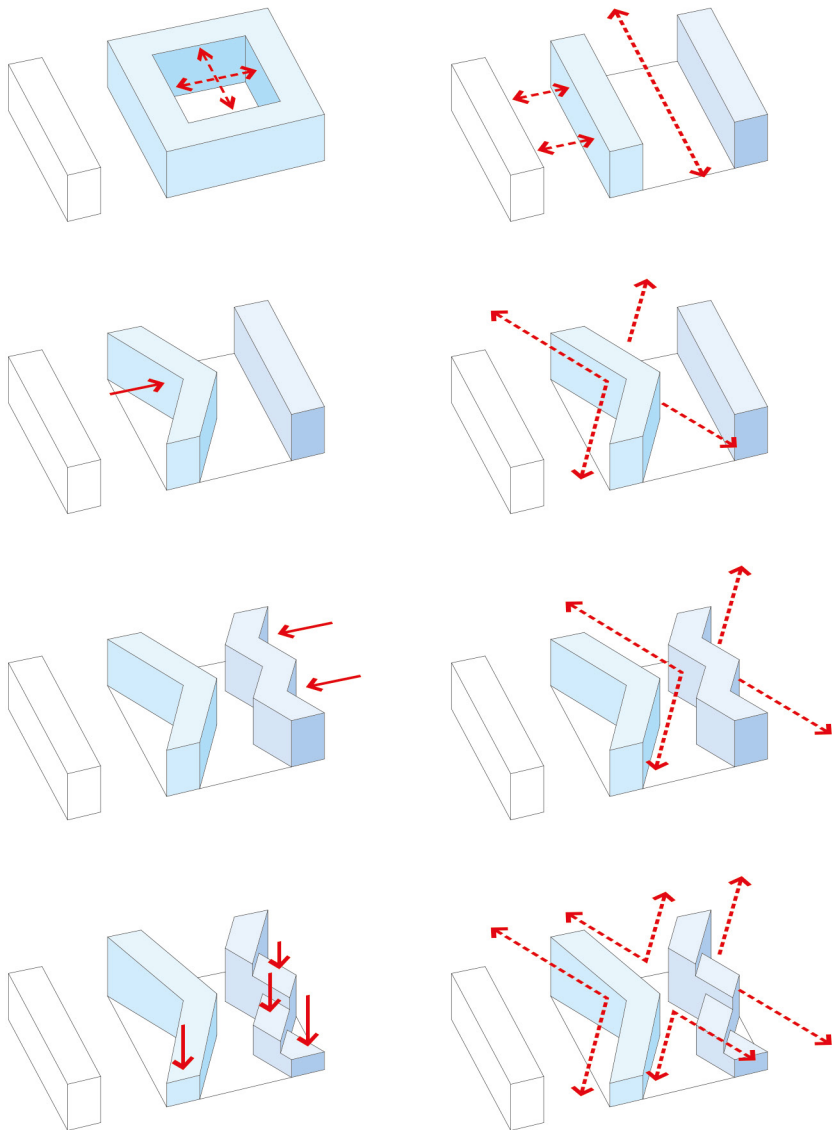
CLIENT
Høpfner A/S, Danish Oil Company

COLLABORATORS
PLOT, BIG, Moe, NCC

LOCATION
Copenhagen, Denmark

STATUS
Completed 2005

AWARDS
INFOSTEEL AWARD NOMINATION
MIES VAN DER ROHE PRIZE NOMINATION
SCANDINAVIAN FORUM PRIZE



Photography
by Julien Lanoo



Mountain Dwellings

PROJECT
Residential, Parking, Office, Retail

SIZE
33 000 m², 80 Units, 480 Parking Spaces

BUDGET
260 000 000 DKK (34 873 000 EUR)

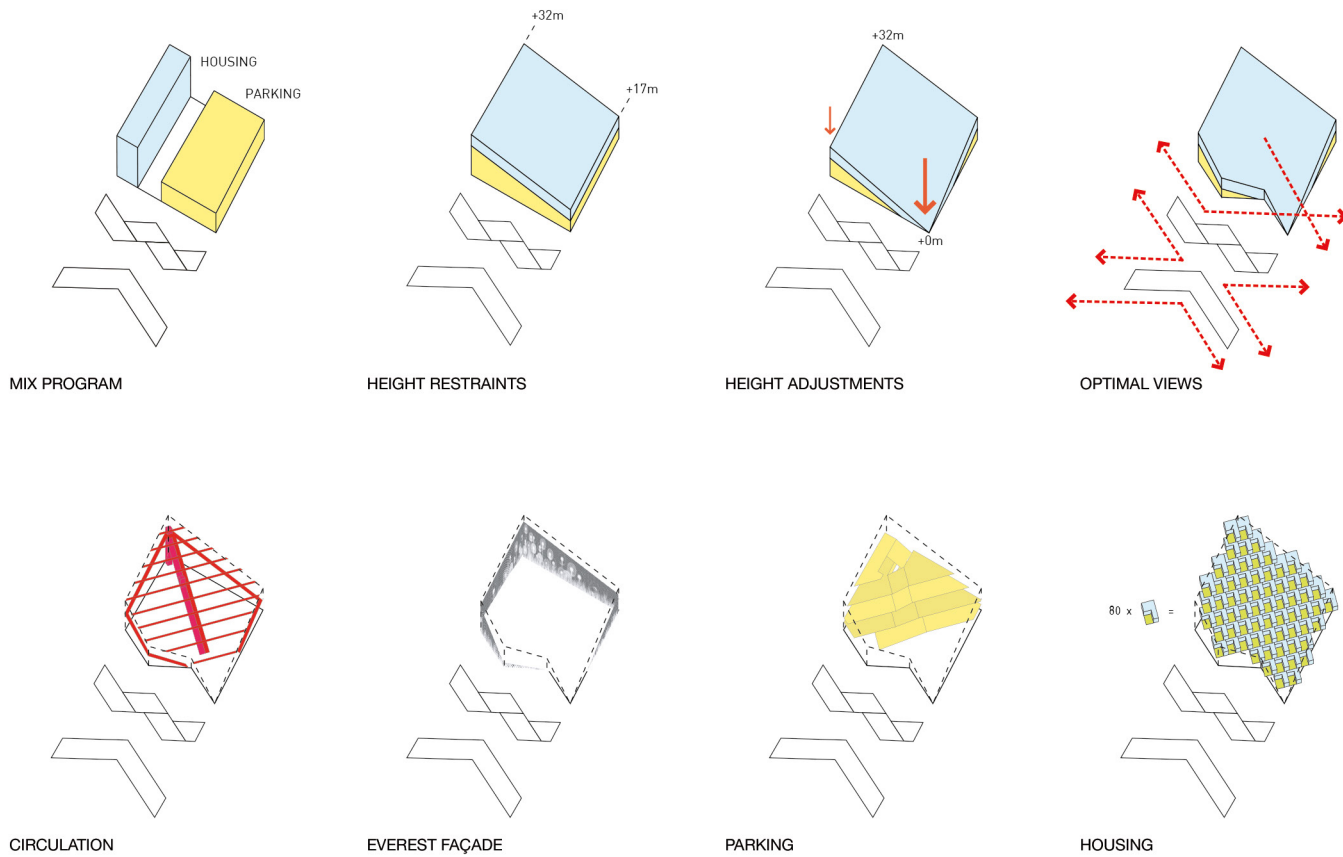
CLIENT
Høpfner A/S, Danish Oli Company

COLLABORATORS
PLOT, BIG, Moe

LOCATION
Ørestad, Copenhagen, Denmark

STATUS
Completed 2008

AWARDS
MIPIM AWARD
JØRN UTZON AWARD
ARCHITIZER A+ AWARD
CHICAGO ATHENEUM AWARD
ULI PRIZE
FORUM AID AWARD
MIES VAN DER ROHE AWARD NOMINATION
URBAN LAND INSTITUTE AWARD
WORLD ARCHITECTURE FESTIVAL AWARD
DANISH WOOD AWARD



Photography
by Julien Lanoo





Photography
by Dragør Luftfoto



MacDonald Ziggurat Housing

PROJECT
Housing

SIZE
4 800 m², 60 Apartments

BUDGET
8 200 000 EUR

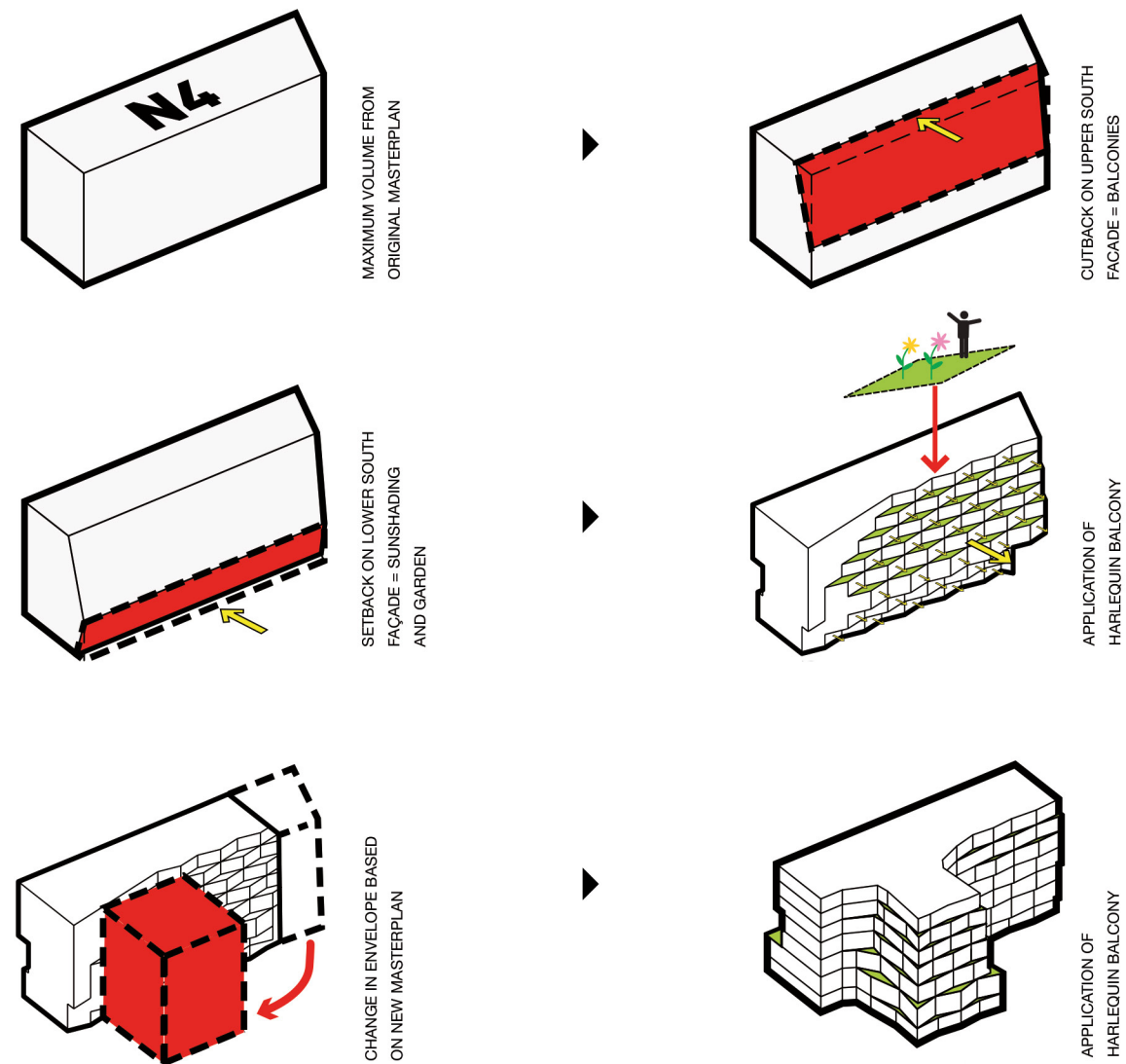
SQM PRIZE
1708,33 EUR

CLIENT
ICADE / ARCOBA/ 3F

COLLABORATORS
XDGA, OMA, FAA, Adlib, SETEC, ALTO, Emeric Lambert

LOCATION
Paris, France

STATUS
Completed 2015



Photography
by Julien Lanco



MacDonald The Invader

PROJECT
Housing

SIZE
3 700 m², 30 Apartments

BUDGET
4 500 000 EUR

SQM PRIZE
1216,21EUR

CLIENT
ICADE / ARCOBA/ 3F

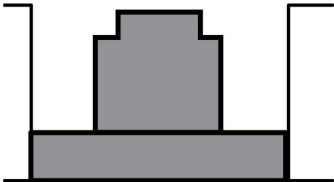
COLLABORATORS
XDGA, OMA, FAA, Adlib, SETEC, ALTO, Emeric Lambert

LOCATION
Paris, France

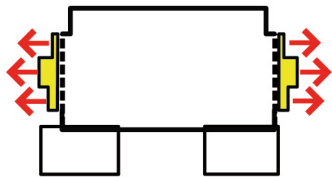
STATUS
Completed 2015



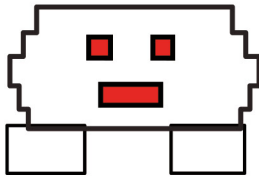
BUILDING BOUNDARY



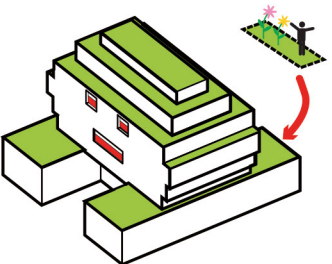
MAXIMUM VOLUME



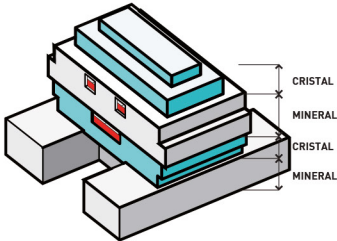
VOLUME SHIFT FOR BALCONIES



SPACE INVADER



GREEN SPACES



MATERIAL APPLICATION

Photography
by Julien Lancoo



Hedonistic Rooftop Penthouses

PROJECT
Three penthouses + roof terrace

SIZE
900 m²

BUDGET
950 000 EUR

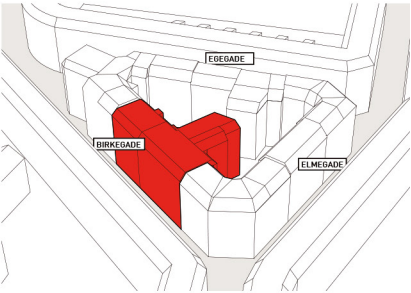
SQM PRIZE
1055,55 EUR

CLIENT
A/B Birkegade

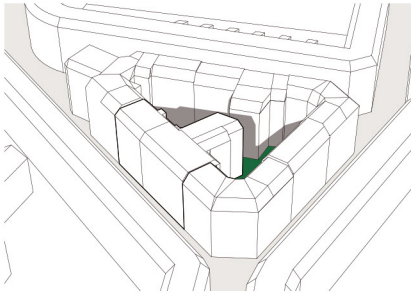
COLLABORATORS
PLOT, BIG

LOCATION
Nørrebro, København

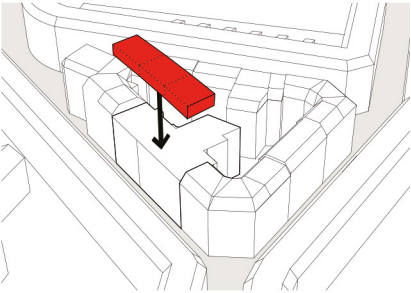
STATUS
Completed 2011



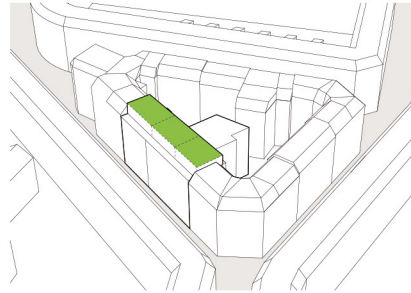
01
BIRKEGADE IS ONE OF THE MOST
DENSELY POPULATED AREAS IN
COPENHAGEN.



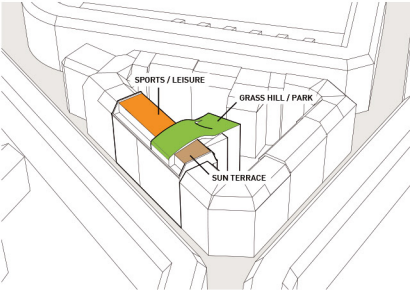
02
THIS IS USUALLY REFLECTED WITH
REALLY NARROW COURTYARDS THAT
RECEIVE VERY LITTLE SUNLIGHT.



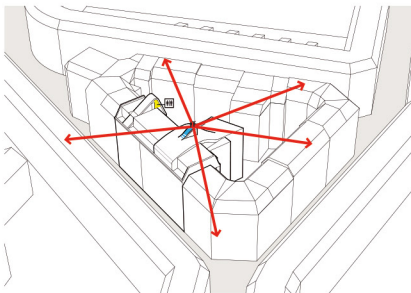
03
THE PROGRAM IS TO DEVELOPE
THREE PENTHOUSE APARTMENTS.



04
THE DRIVING CONCEPT IS
TO CREATE THE MISSING GARDEN
EXPERIENCE AT THE TOP OF THE
EXISTING HOUSING BLOCK.



05
THEREFORE, THE ROOFTOP IS
DESIGNED AS A GARDEN SPACE WITH
FUNCTIONS AND ASSOCIATED
MATERIALITY.



06
... AND NOT TO MENTION ONE THAT
HAS THE MOST SPECTACULAR VIEWS
OF COPENHAGEN.

Photography
by Nikolaj Holm Møller



Photography
by Julien Lanoo



Casa Jura

PROJECT
Residential

SIZE
134 m²

BUDGET
200 000 EUR

CLIENT
Confidential

LOCATION
Bois D'amont, France

STATUS
Completed 2014



Photography
by Julien Lanoo



Antwerp Police Department

PROJECT
Police department convertible into housing

SIZE
460 m²

BUDGET
475 000 EUR

SQM PRIZE
1032 EUR

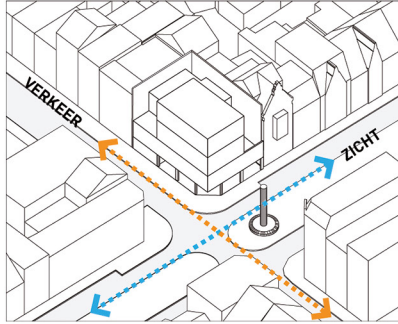
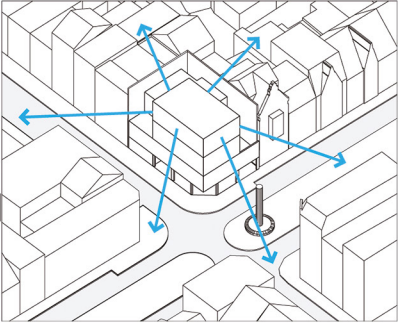
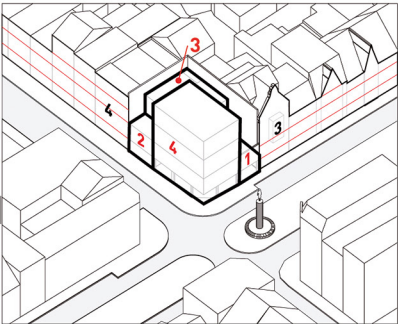
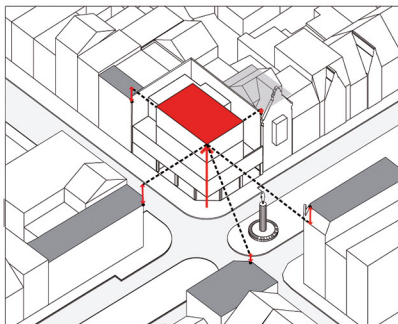
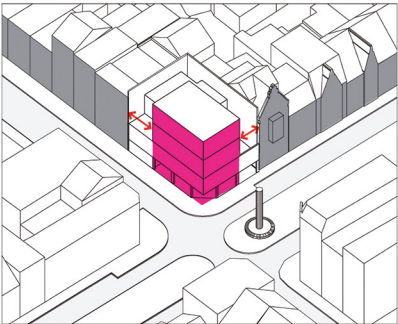
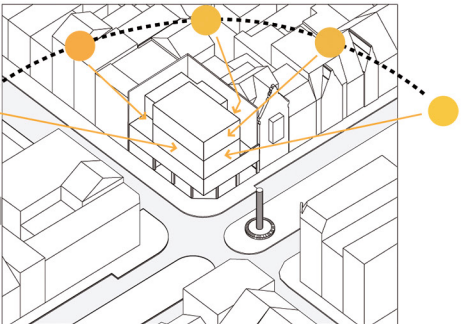
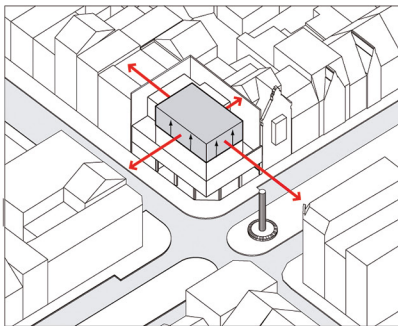
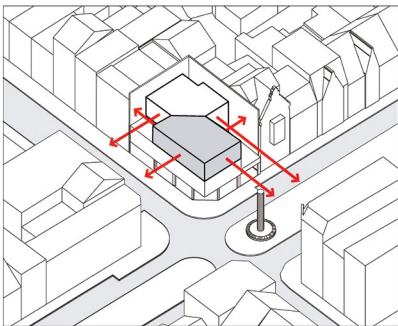
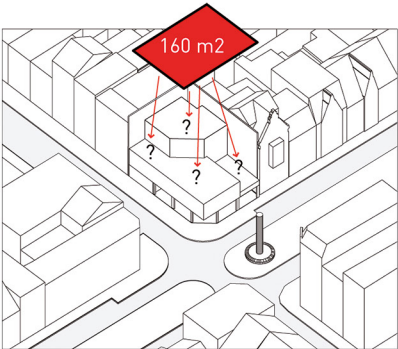
CLIENT
AG VESPA

COLLABORATORS
Buro Bouwtechniek

LOCATION
Antwerp, Belgium

STATUS
Completed 2014

AWARDS
COMPETITION FIRST PRIZE



Photography
by Julien Lanoo





'The Gang' school

PROJECT
Community Building, Youth House, Re-use

SIZE
2 000 m²

SQM PRIZE
1216,21 EUR

BUDGET
3 000 000 EUR

CLIENT
Sjakket, Realdania

COLLABORATORS
PLOT, BIG, Birch & Krogboe

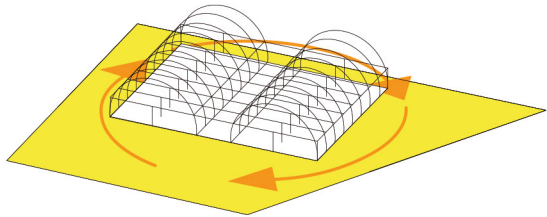
LOCATION
Copenhagen, Denmark

STATUS
Completed 2007

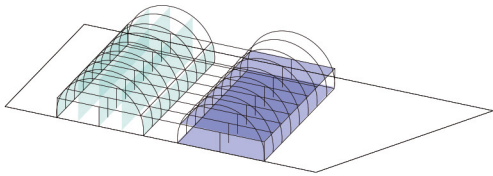
AWARDS
FORUM AID AWARD
CONTRACTWORLD AWARD



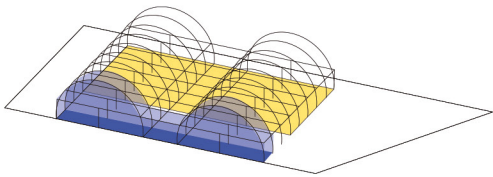
OUTDOOR AREA



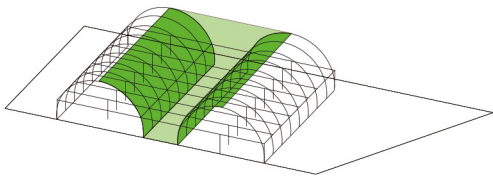
VERTICAL/HORIZONTAL



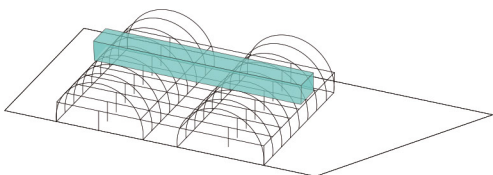
PROGRAM WALL



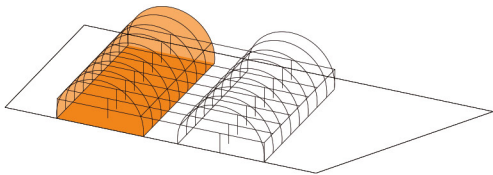
CREVASSE



SOUNDRoom



DENSE/OPEN



Helsingør Psychiatric Hospital

PROJECT
Healthcare, PSYCHIATRIC HOSPITAL

SIZE
6 000 m²

BUDGET
80 000 000 DKK

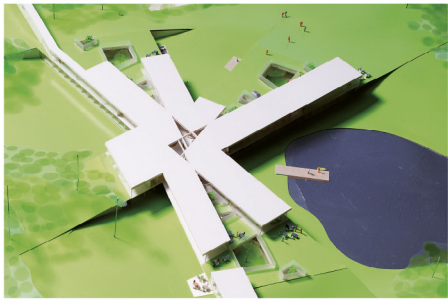
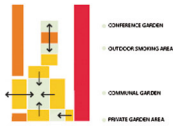
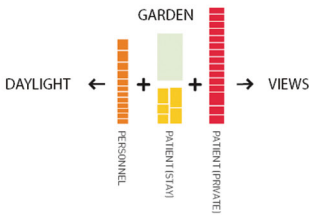
CLIENT
Frederiksborg County, Helsingør Hospital

COLLABORATORS
PLOT, BIG, Moe & Brødsgaard

LOCATION
Helsingør, Denmark

STATUS
Completed 2006

AWARDS
FORUM AID AWARD NOMINATION
MIES VAN DER ROHE PRIZE NOMINATION
SCANDINAVIAN FORUM PRIZE NOMINATION



Maison Stéphane Hessel

PROJECT
Youth Hostel, Offices and Kindergarten

SIZE
6 000 M2

BUDGET
11 400 000 EUR

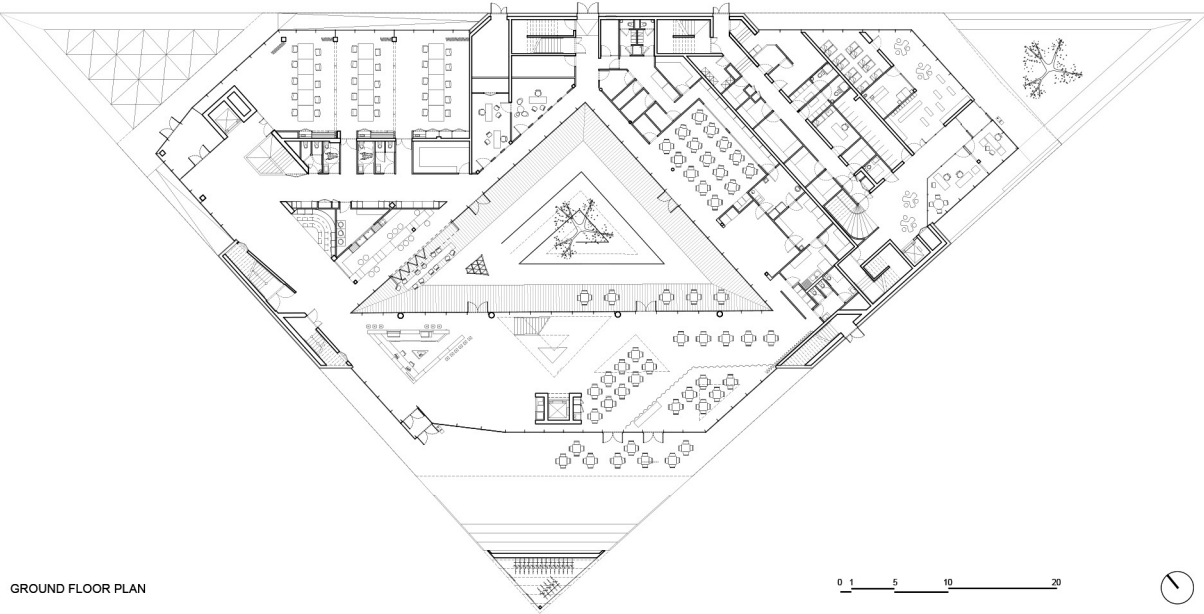
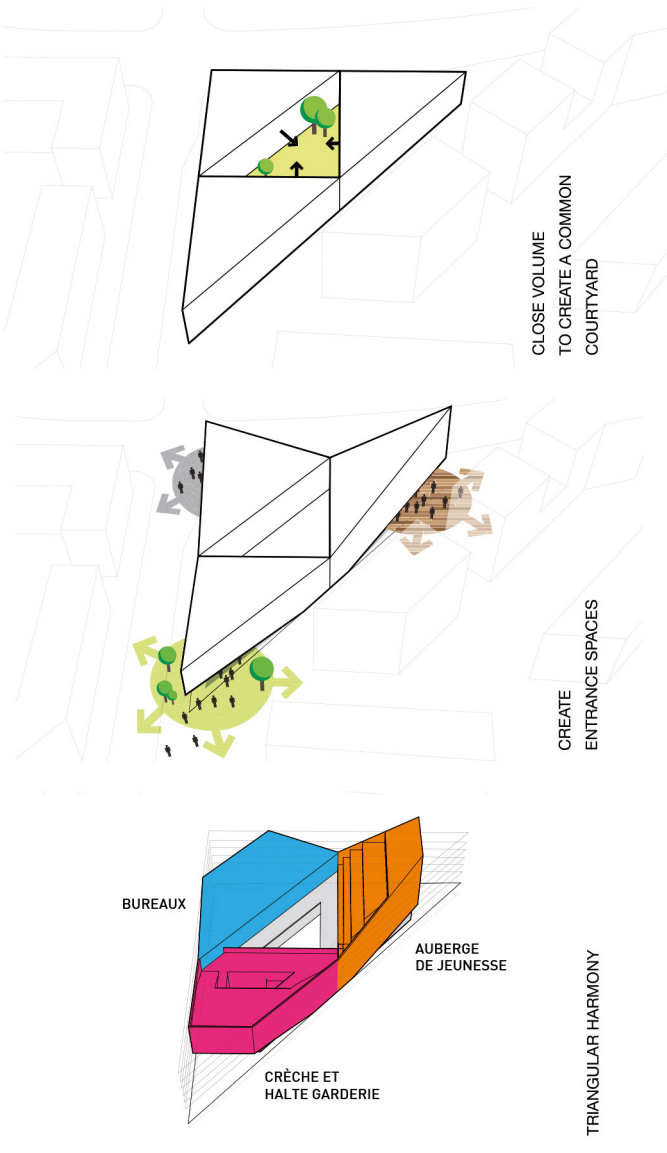
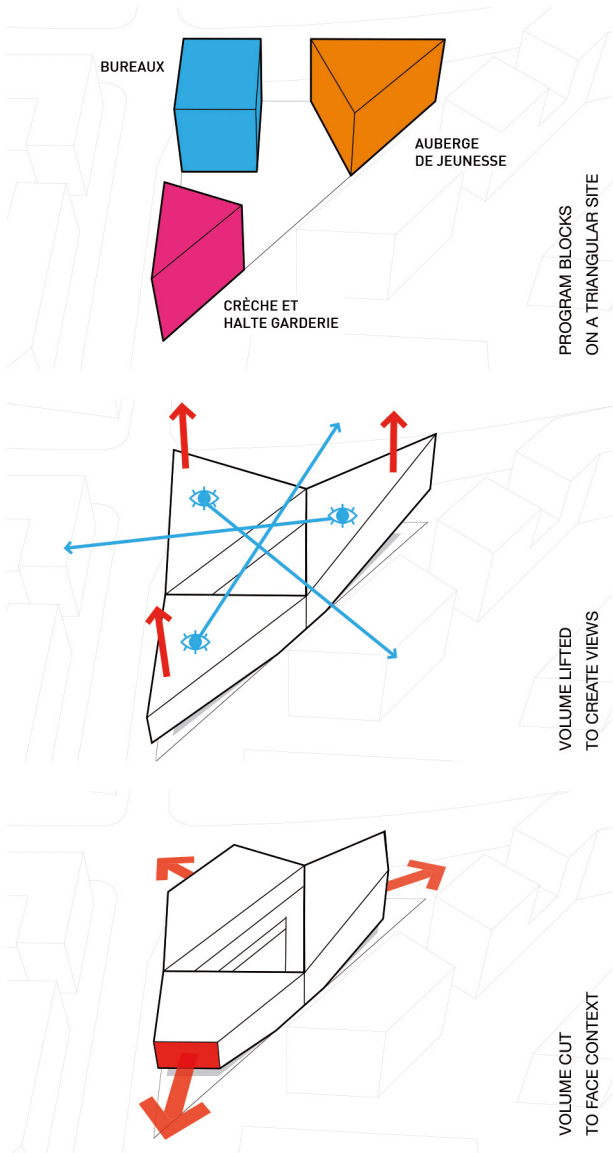
SQM PRIZE
1900 EUR

CLIENT
City of Lille, France

COLLABORATORS
Agence Franck Boutté, TANDEM+, EGIS, SL2EC

LOCATION
Lille, France

STATUS
Completed 2016





Photography
by Julien Lanoo



Photography
by Julien Lanoo



Holmenkollen Ski Jump

PROJECT
Ski Jump, Stadium, Renovation & Addition
for World Championship 2011

SIZE
32 000 m²

BUDGET
700 000 000 NOK (82 000 000 EUR)

SQM PRIZE
2562,5 EUR

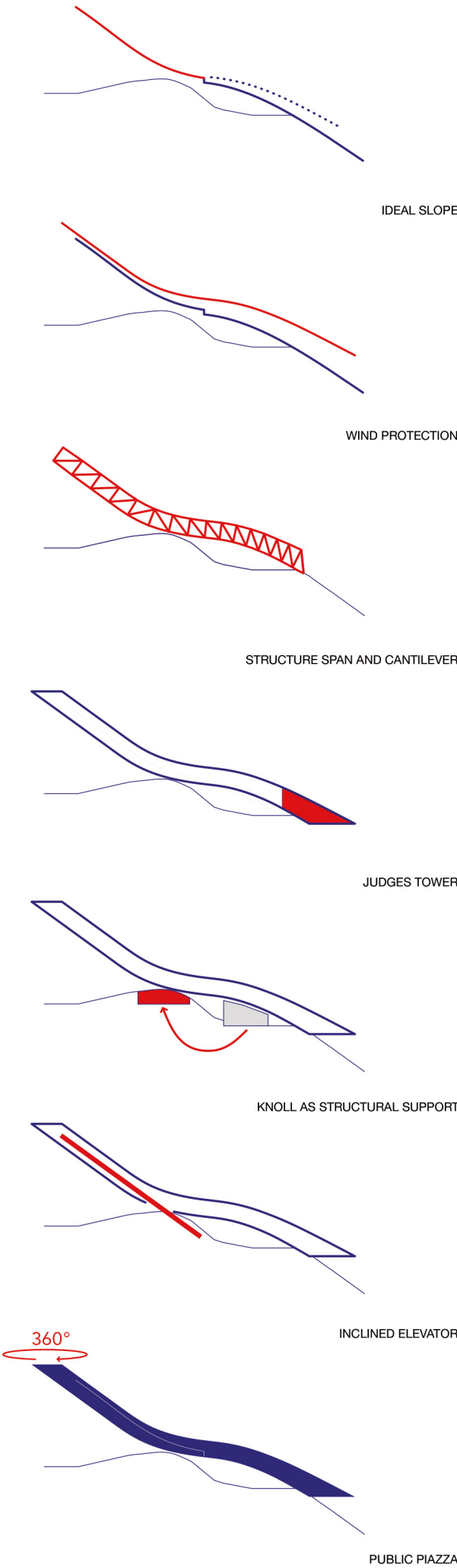
CLIENT
Oslo Municipality

COLLABORATORS
Norconsult, Grindaker, Metallplan, Intra

LOCATION
Oslo, Norway

STATUS
Completed 2011

AWARDS
IAKS ALL TIME AWARD 2015
ARCHITIZER A+ AWARD
EUROPEAN STEEL AWARD
INFOSTEEL AWARD NOMINATION



Photography
by Iwan Baan







Maritime Youth House

SIZE

2 000 m²

BUDGET

1 170 000 EUR

CLIENT

Kvarterløft, Lokale og Anlægsfonden,
The Urban Development Fund

COLLABORATORS

PLOT, BIG, Birch & Krogboe

LOCATION

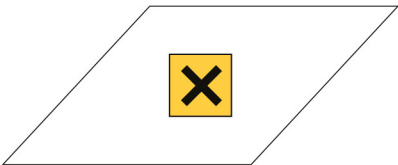
Sundby Harbour, Copenhagen, Denmark

STATUS

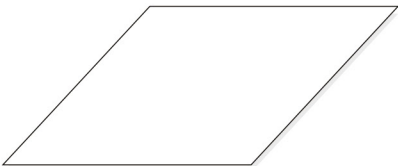
Completed 2004

AWARDS

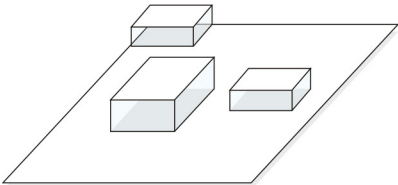
AR+D AWARD
MIES VAN DER ROHE PRIZE NOMINATION
COPENHAGEN MUNICIPALITY PRIZE



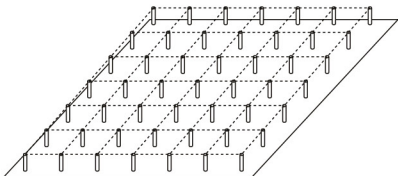
POLLUTED SOIL - 2500M2



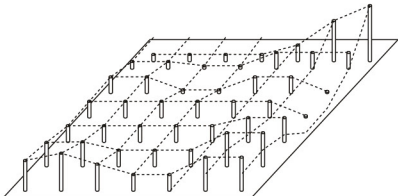
RAISED PLATFORM - 2500 M2



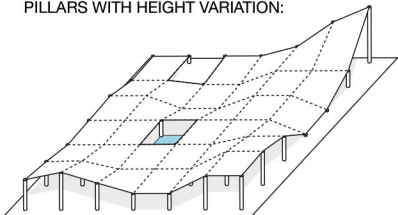
BUILDING AND LANDSCAPE



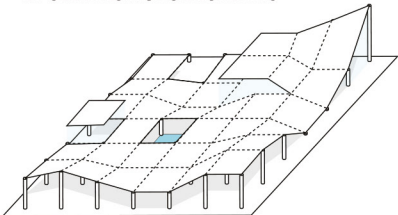
PILLARS ON A GRID SYSTEM



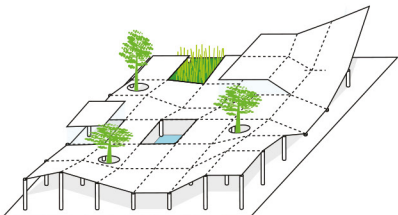
PILLARS WITH HEIGHT VARIATION:



DIPS AND HOLES FOR ACTIVITIES



INTEGRATED SPACES



A NEW NATURAL ENVIRONMENT



Photography
by Paolo Rosselli

Copenhagen Harbour Bath

PROJECT

Harbour Bath

SIZE

1600 m²

BUDGET

520 000 EUR

SQM PRIZE

325 EUR

CLIENT

Copenhagen City Council, The Space and Facility Foundation for Sports

COLLABORATORS

BIG, Birch og Krogboe, CC Design

LOCATION

Copenhagen, Denmark

STATUS

Completed 2003

AWARDS

IPC/IAKS DISTINCTION 2007

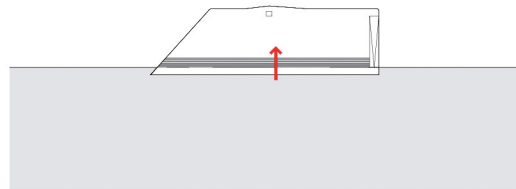
IOC/IAKS AWARD 2007

COPENHAGEN COMMUNE PRIZE 2004

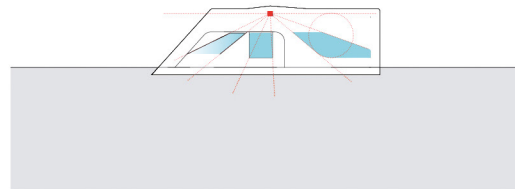
EUROPEAN PRIZE BEST URBAN PUBLIC SPACE 2004



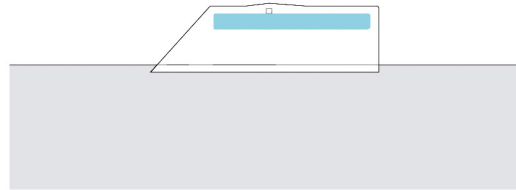
CONTINUITY



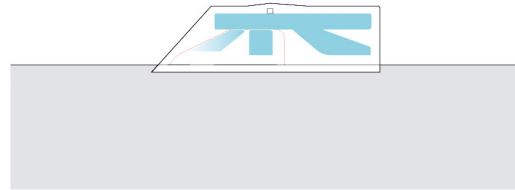
LIFEGUARD VISIBILITY



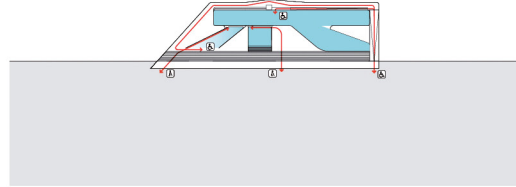
LAP SWIMMING



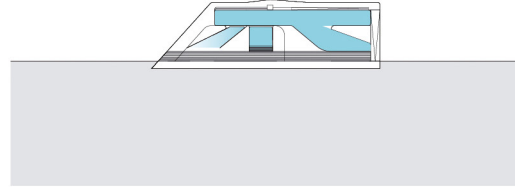
CHILDREN'S PLAY AREA



ACCESSIBILITY



HARBOURSCAPE



Kalvebod Waves

PROJECT
Urban Space, Harbor Front

SIZE
4 500 m²

BUDGET
40 000 000 DKK (5 400 000 EUR)

SQM PRIZE
1200 EUR

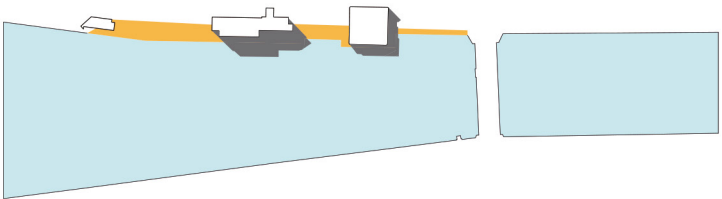
CLIENT
Copenhagen's Municipality

COLLABORATORS
KLAR, Future Experience, U-Turn, White Water Adventure Park

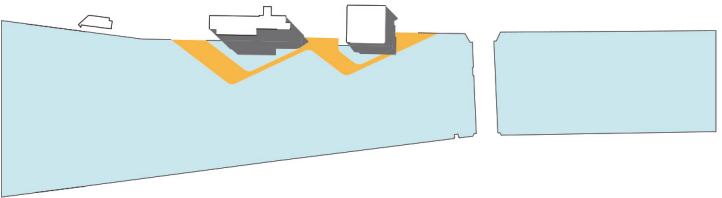
LOCATION
Copenhagen, Denmark

STATUS
Completed 2014

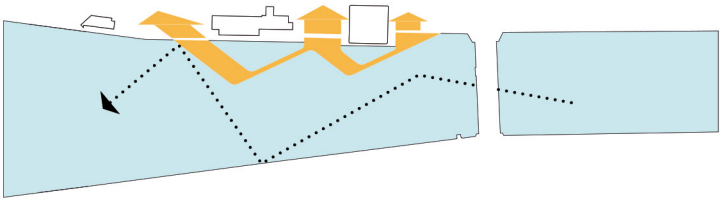
AWARDS
WAN URBAN DESIGN AWARD 2014
AIT AWARD 2014



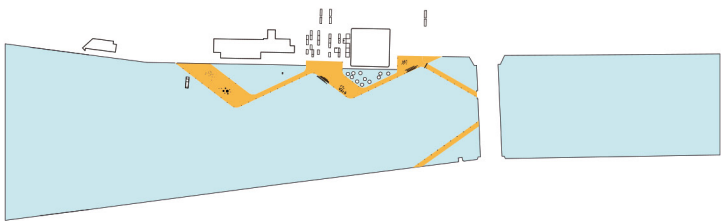
SHADOWED PROMENADE



SUNNY PROMENADE



NORTH/SOUTH CONNECTIONS



CITY CONNECTIONS

Photography
by Iwan Baan





Photography
by Julien Lanoo

Photography
JDS Architects



Photography
by Julien Lanoo



Faaborg Sea Bath

PROJECT
Harbor Bath and Blue Base

SIZE
1 600 m² + 500 m²

SQM PRIZE
952,38 EUR

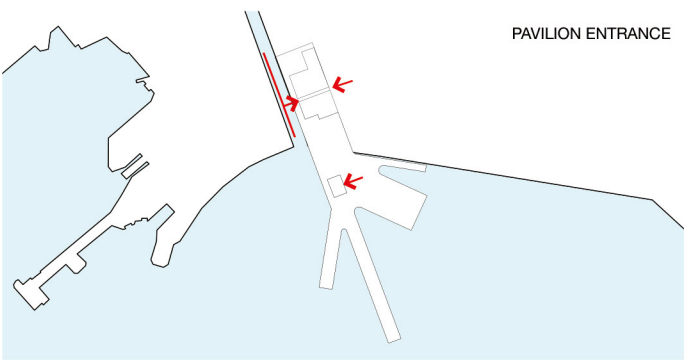
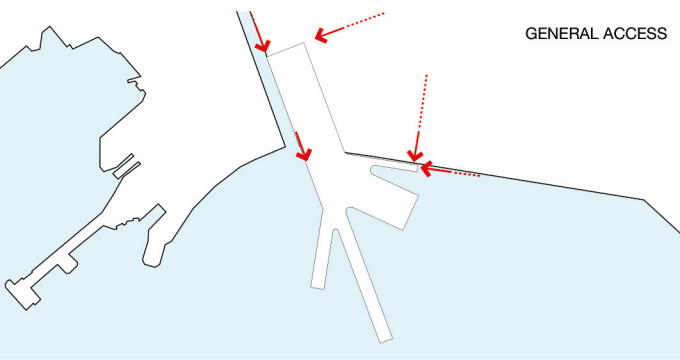
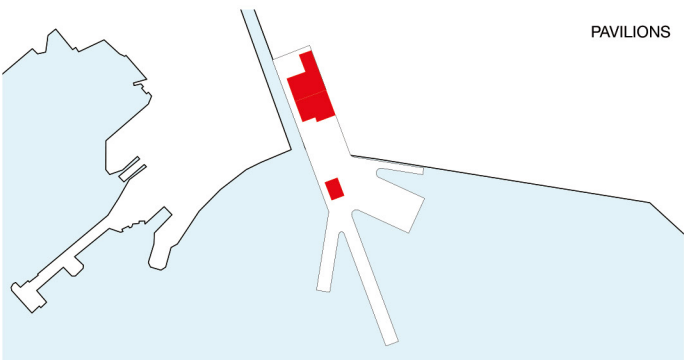
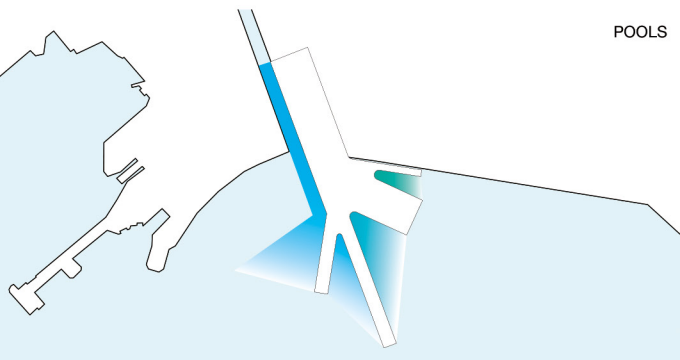
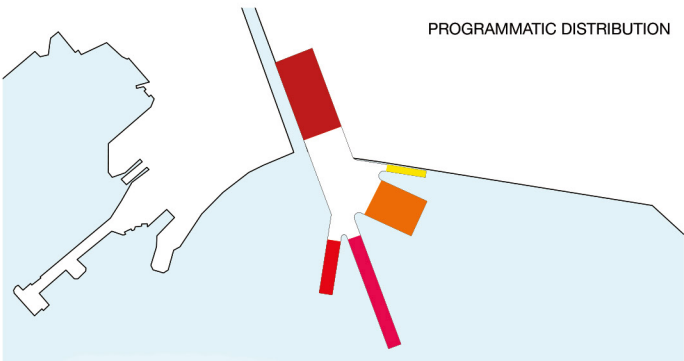
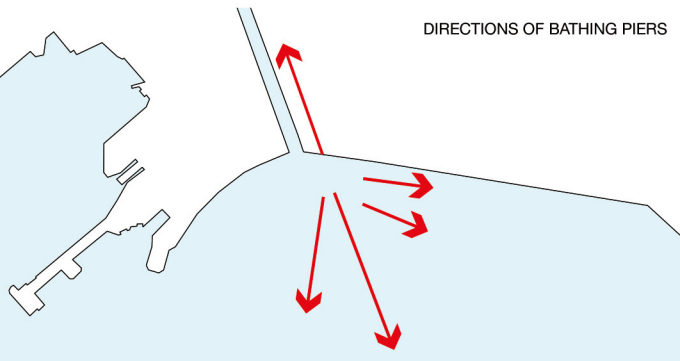
BUDGET
15 000 000 DKK (2 000 000 EUR)

CLIENT
Faaborg Kommune

COLLABORATORS
KLAR, Creo, Sloth-Møller

LOCATION
Faaborg, Denmark

STATUS
Completed 2014



Photography
by Julien Lanoo





Siblings Factory

PROJECT
Concept Store

SIZE
200 m²

BUDGET
Confidential

CLIENT
Aymeric Watine & Marie de Moussac

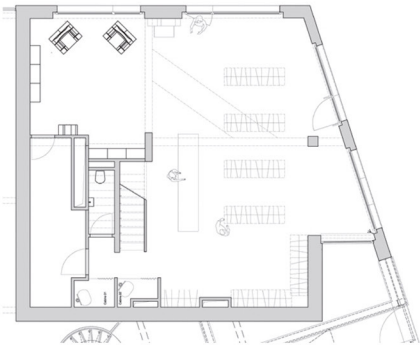
LOCATION
Brussels, Belgium

STATUS
Completed 2013

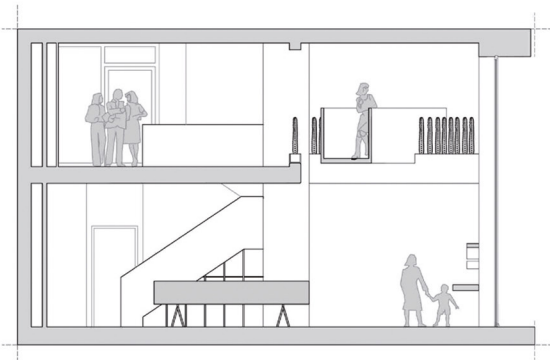
SITEPLAN



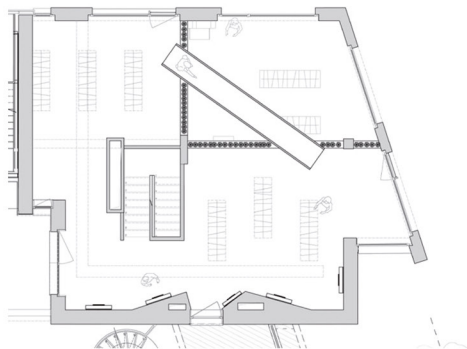
GROUND FLOOR



SECTION



FIRST FLOOR



Hangzhou Gateway

PROJECT
Mixed-use, Offices, Commercial, Restaurant and Post Office

SIZE
23 600 m²

SQM PRIZE
932,20 EUR

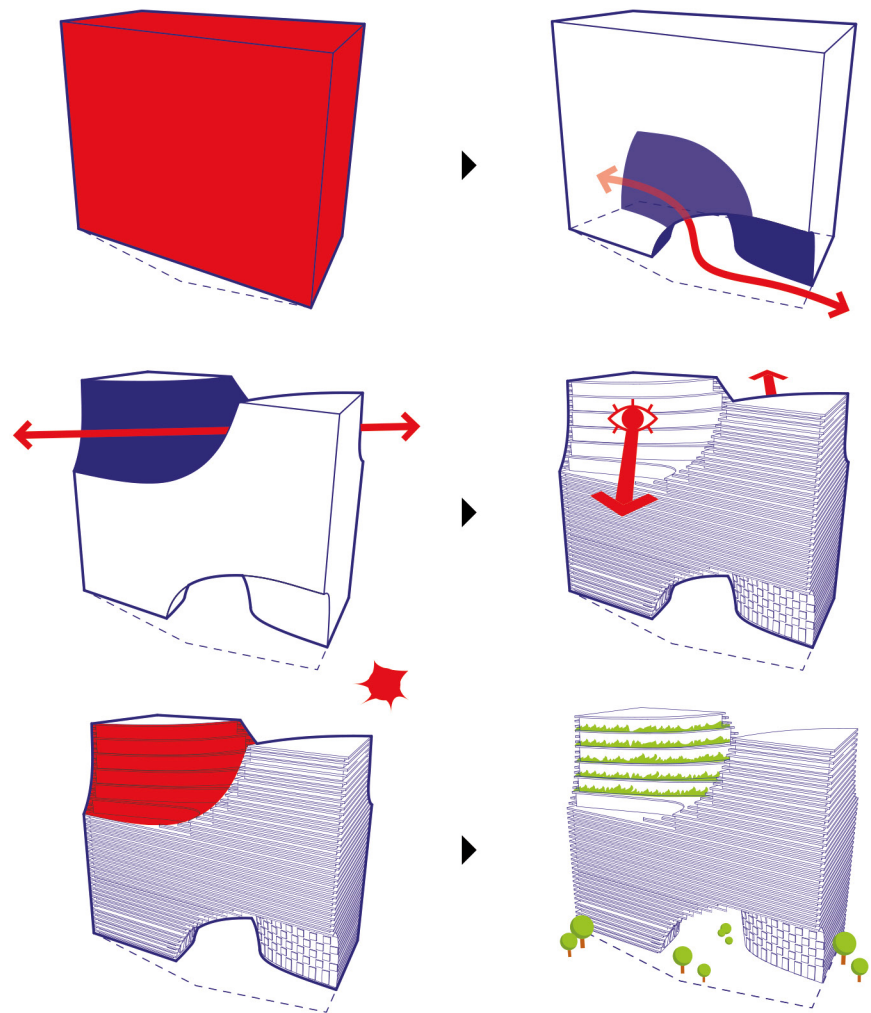
BUDGET
22 000 000 EUR

CLIENT
Hangzhou Xintiandi Group LTD, Hakim

COLLABORATORS
MUDI, ChinaCUC

LOCATION
Hangzhou, People's Republic of China

STATUS
Completed 2015





Kagithane Premier Campus Office

PROJECT

Offices, retail, parking, public space

SIZE

100 000 m²

BUDGET

Confidential

CLIENT

Feryapi

COLLABORATORS

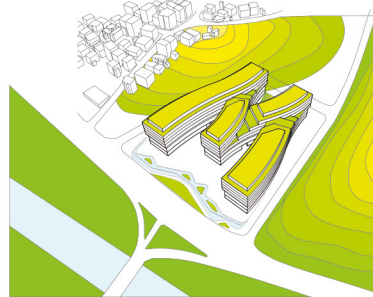
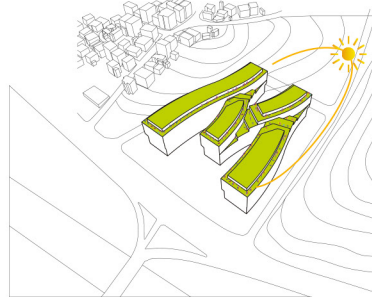
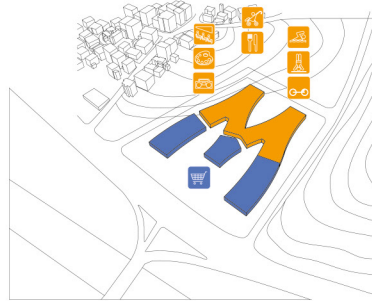
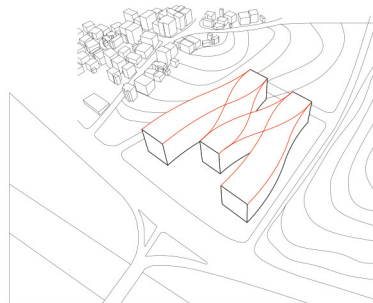
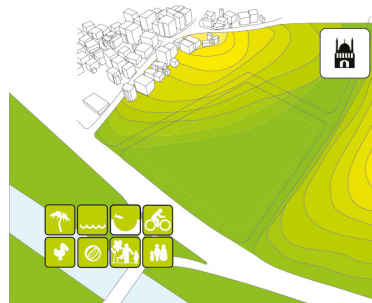
DB Architects, Tavusbay-STATIK, Geodinamik, Dinamik Proje, Pozitif Proje

LOCATION

Istanbul, Turkey

STATUS

Completion 2016





Qingdao Marine Biotechnology Center

PROJECT
Office Building

SIZE
183 000 m²

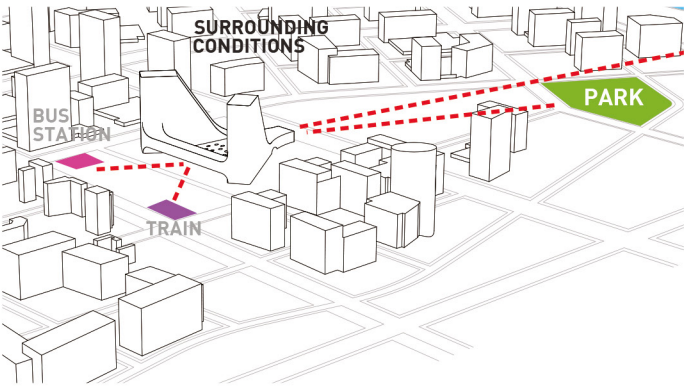
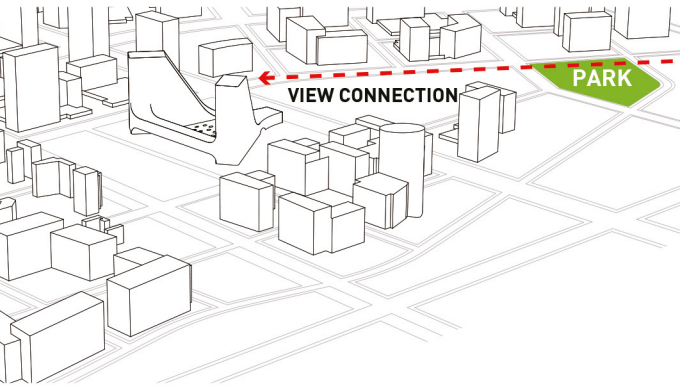
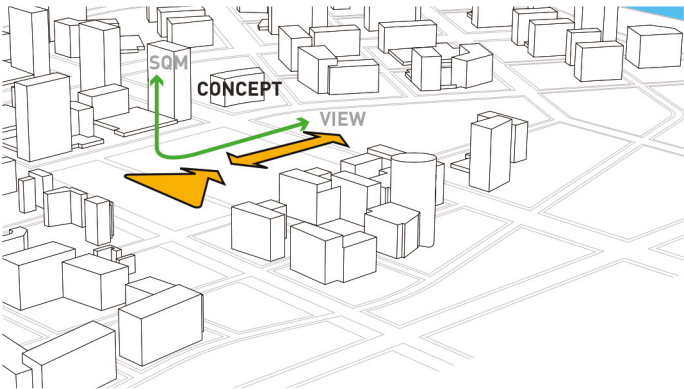
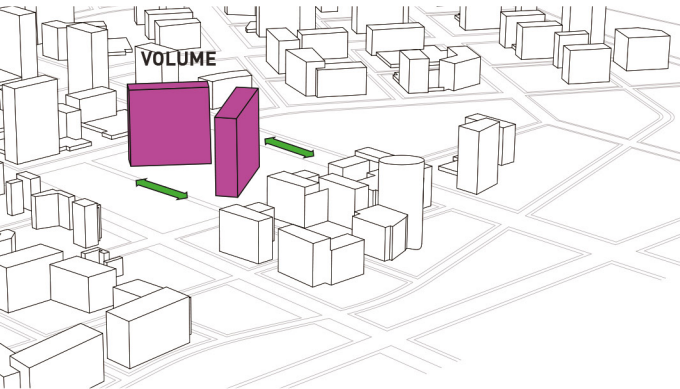
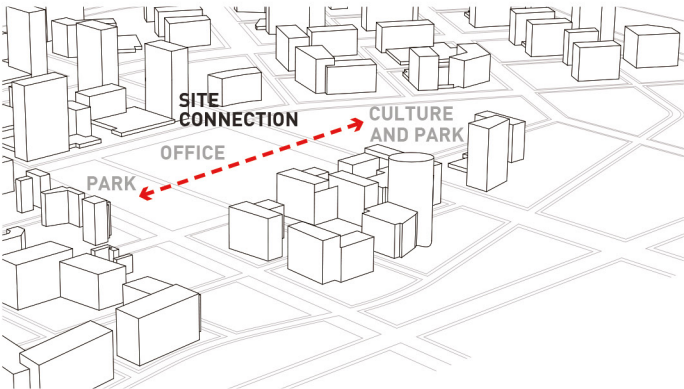
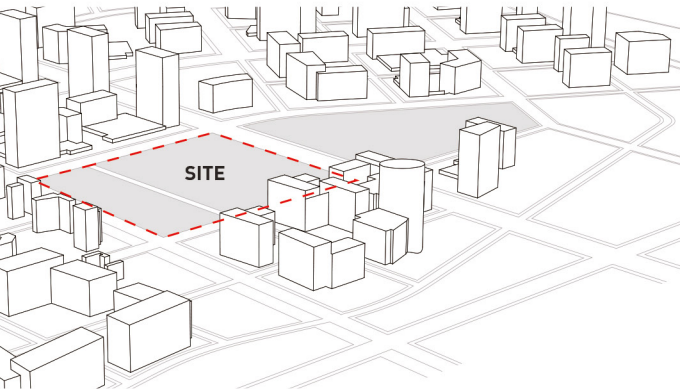
BUDGET
Confidential

CLIENT
Baosteel

COLLABORATORS
MUDI

LOCATION
Qingdao, China

STATUS
Completion 2016



Photography
by JDS Architects





SATÖ LÖLYRAMID
PROJECT: RESIDENTIAL, RETAIL, SAUNA
SIZE: 8 000 M2



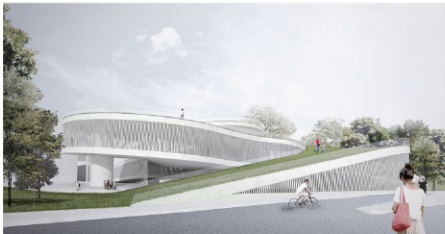
TIRANA PARK ENTRANCE
PROJECT: MASTERPLAN, PUBLIC SERVICES
SIZE: 50 000 M2



CLICHY BATIGNOLLES HOUSING
PROJECT: HOUSING, OFFICES, RETAIL, PARKING
SIZE: 11 500 M2



BRUSSELS UCCLE RUE DE STALLE
PROJECT: ART GALLERY
SIZE: 6 900 M2



BOOM PACHTERSLEI
PROJECT: RESIDENTIAL
SIZE: 8 000 M2



BRUSSELS ANDERLECHT BIESTEBROECK
PROJECT: HOUSING, OFFICES, RETAIL, PARKING
SIZE: 70 000 M2



BRUSSELS CHAUSSEE DE CHARLEROI
PROJECT: HOUSING, RETAIL, PARKING
SIZE: 2 5000 M2



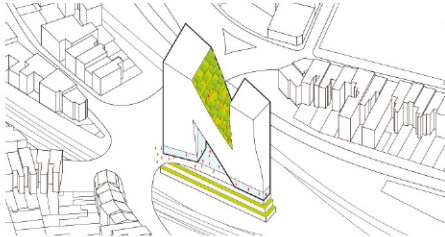
TÆKKER HOUSE AARHUS
PROJECT: HOUSING RETAIL
SIZE: 2 300 M2



ISTANBUL SUMMITS
PROJECT: PLANNING, RESIDENTIAL, COMMERCIAL
SIZE: 400 000 M2



NAMUR TOWER
PROJECT: HOUSING, OFFICES, RETAIL, PARKING
SIZE: 16 000 M2



BRUSSELS FOREST CROISSANT
PROJECT: HOUSING, OFFICES, RETAIL, PARKING
SIZE: 1 800 M2



NORRTALJE HARBOUR
PROJECT: MARINA, HARBOUR BATH, HOTEL
SIZE: 28 000 M²



KORSØR WATER PARK
PROJECT: INTERNATIONAL WATER ADVENTURE PARK
SIZE: 16HA



SECRET HOUSE, BRUSSELS
PROJECT: HOUSE
SIZE: 400 M2



KALVEBOD WAVES, COPENHAGEN, DENMARK
PROJECT: URBAN SPACE, HARBOR FRONT
SIZE: 8 500 M2



ZEYINBURNU ISTANBUL
PROJECT: COMMERCIAL, RESIDENTIAL, HOTEL
SIZE: 300 000 M2



THE ICEBERG, AARHUS, DENMARK
PROJECT: RESIDENTIAL, MIXED-USE DEVELOPMENT
SIZE: 21 600 M2



KEIZER KAREL BUILDING, GHENT
PROJECT: MIXED-USE, LUXURY, APARTMENTS, RETAIL, PARKING
SIZE: 10 000 M2



SHENZHEN HILLTOWN, CHINA
PROJECT: RESIDENTIAL TOWERS, HOTEL, SPORTS, COMMERCIAL
SIZE: 150 000 M2



CASA JURA
PROJECT: HOUSE
SIZE: 130 M2



AVAZA AQUA PARK TURKMENISTAN
PROJECT: WELLNESS CENTER, RESTAURANT, HOTEL, MARINA
SIZE: 5 000 M2



SIBLINGS FACTORY BRUSSELS
PROJECT: COMMERCIAL
SIZE: 200 M2



NEW MOBILITY NEW YORK CITY, USA
PROJECT: MOBILITY, RESEARCH



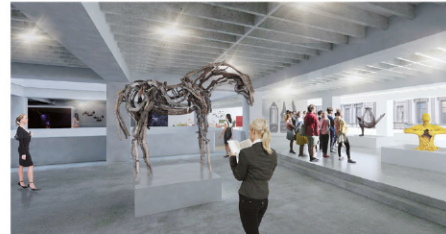
SØNDERMARKEN, VEJLE, DENMARK
PROJECT: MASTERPLAN



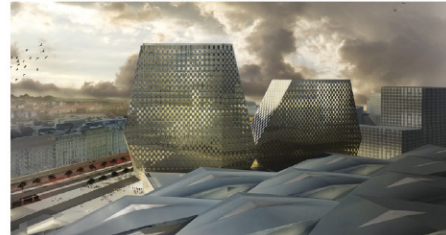
HAMMERHAUS VISITOR CENTER, DENMARK
PROJECT: VISITORS CENTER, MUSEUM
SIZE: 2 000 M2



MEDIA ART CENTER BRUSSELS
PROJECT: EXHIBITION CENTER, OFFICES, SHOWROOM, RESTAURANT
SIZE: 5 000 M2



BUSINESS CENTER VIENNA
PROJECT: BUSINESS CENTER
SIZE: 90 000 M2



BERCHEM POLICE DEPARTMENT, ANTWERP
PROJECT: POLICE STATION
SIZE: 670 M2



ADANA CENTER, TURKEY
PROJECT: FOOTBALL STADIUM, RETAIL, OFFICES, HOUSING, HOTEL
SIZE: 212 000 M2



NOUVEL HOTEL JUDICIAIRE, SWITZERLAND
PROJECT: JUDICIAL HOTEL
SIZE: 11 800 M2



TOWN BRANCH COMMONS, KENTUCKY, USA
PROJECT: MASTERPLAN



PO KU TAINAN, TAIWAN
PROJECT: PLANNING, COMMERCIAL, PUBLIC, CULTURE, HOUSING
SIZE: 167 000 M2



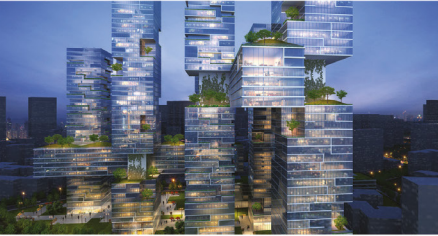
HELSINKI PUBLIC LIBRARY, FINLAND
PROJECT: PUBLIC LIBRARY
SIZE: 16 000 M2



CARLSBERG, COPENHAGEN, DENMARK
PROJECT: EDUCATION, RETAIL, HOUSING
SIZE: 40 000 M2



WUHAN HUANZIHU, CHINA
PROJECT: RESIDENTIAL, MIXED-USE
SIZE: 200 000 M2



ART GALLERY JEJU ISLAND, SOUTH KOREA
PROJECT: ART GALLERY
SIZE: 5 000 M2



AALTO UNIVERSITY CAMPUS, HELSINKI
PROJECT: UNIVERSITY CAMPUS
SIZE: 60 000 M2



QINGDAO BLUE SILICON VALLEY, QINGDAO, CHINA
PROJECT: OFFICE, EXHIBITION, MUSEUM
SIZE: 124 000 M2



RØNNE SVØMMEHAL, DENMARK
PROJECT: SWIMMING POOL
SIZE: 2 000 M2



BELO HORIZONTE HOUSE 15, BRAZIL
PROJECT: HOUSE
SIZE: 500 M2



CITE INTERNATIONALE RENNES, FRANCE
PROJECT: STUDENT HOUSING, OFFICES, SPORT CENTER
SIZE: 7500 M2



KORTRIJK SCHOOLS, BELGIUM
PROJECT: SCHOOL
SIZE: 10 500 M2



GANGNAM OFFICETEL, SEOUL
PROJECT: OFFICE, HOUSING
SIZE: 38 000 M2



MARINA HOTEL RESORT ADANA, TURKEY
PROJECT: WELLNESS CENTER, HOTEL, SHOPS, HOUSING, MARINA
SIZE: 100 000 M2



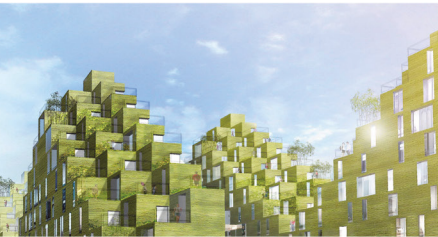
CETC HANGZHOU, CHINA
PROJECT: OFFICE, LABORATORY
SIZE: 150 000 M2



CHONGMING BIKE CITY, HANGZHOU, CHINA
PROJECT: MUSEUM, VISITOR CENTER, PARK
SIZE: 40 000 M2



HOUSING IN SAO BERNARDO, SAO PAULO, BRAZIL
PROJECT: HOUSING
SIZE: 10 500 M2



CAENHATTAN, CAEN, FRANCE
PROJECT: URBAN DEVELOPMENT
SIZE: 114 000 M2



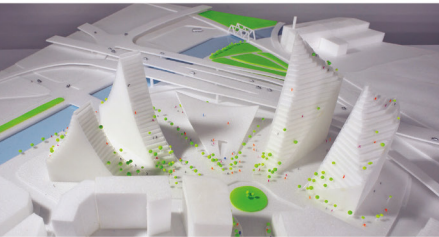
PREMIER CAMPUS KAGITHANE, ISTANBUL
PROJECT: COMMERCIAL, OFFICES
SIZE: 100 000 M2



SQUARE DE L'ACCUEIL, BRUSSELS
PROJECT: HOUSING, SCHOOL EXTENSION, RETAIL, PARKING
SIZE: 8 400 M2



MASTERPLAN CHARLEROI
PROJECT: OFFICES, HOUSING, COMMERCIAL, CONCERT HALL
SIZE: 86 000 M2



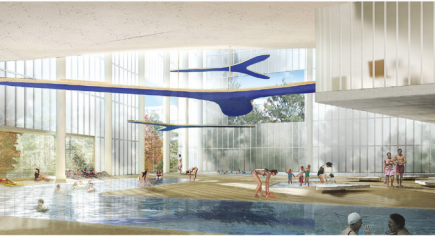
BROOKLYN NIGHT BAZAAR, NEW YORK CITY
PROJECT: LAYOUT DESIGN, FURNITURE DESIGN
SIZE: 3 800 M2



POLICE OFFICE FRANKRIJKLEI, ANTWERP
PROJECT: HEADQUARTERS, POLICE OFFICE
SIZE: 8 150 M2



PISCINE MARX DORMOY, LILLE, FRANCE
PROJECT: SWIMMING HALL EXTENSION
SIZE: 16 480 M2



CAMPUS SUPSI MENDRISIO, SWITZERLAND
PROJECT: EDUCATIONAL
SIZE: 14 000 M2



ABC LILLE, LILLE, FRANCE
PROJECT: YOUTH HOSTEL, INCUBATOR, KINDERGARTEN
SIZE: 7000 M2



XINTIANDI AB, HANGZHOU, CHINA
PROJECT: HOTEL, OFFICES
SIZE: 50 000 M2



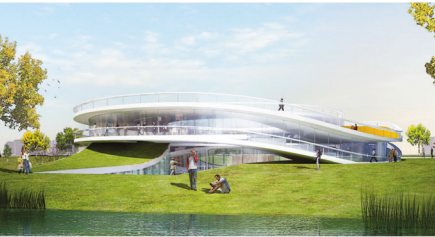
CHENGDU DEVELOPMENT, CHINA
PROJECT: OFFICE, RESIDENTIAL
SIZE: 200 000 M2



XIASHA CULTURE CENTER, CHINA
PROJECT: CULTURAL CENTER, THEATER, LIBRARY
SIZE: 107 000 M2



YOUJUAN COMMUNITY CENTER, SHANGHAI
PROJECT: COMMUNITY CENTER
SIZE: 4 000 M2



HOUSE, SURABAYA, INDONESIA
PROJECT: HOUSE
SIZE: 600 M2



BELO HORIZONTE HOUSE 08, BRAZIL
PROJECT: HOUSE
SIZE: 300 M2



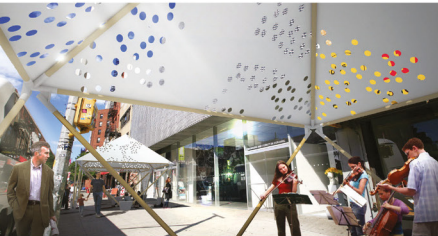
WUHAN K2 TETRIS TOWERS
PROJECT: RESIDENTIAL TOWERS
SIZE: 69 000 M2



SHANGHAI ART VILLAGE, CHINA
PROJECT: RESIDENTIAL, COMMERCIAL, GALLERIES
SIZE: 20 000 M2



IDEAS CITY FESTIVAL TENT, NEW YORK CITY
PROJECT: TEMPORARY OUTDOOR STRUCTURE



GREEN VISITOR CENTER, BEIJING, CHINA
PROJECT: VISITOR CENTER FOR GREEN PARK
SIZE: 5 000 M2



SWIMMING POOL, ANTWERP, BELGIUM
PROJECT: HARBOR BATH
SIZE: 1 200 M2



LES GALERIES VANHAERENTS, BRUSSELS
PROJECT: INTERIOR DESIGN GALLERY
SIZE: 1 000 M2



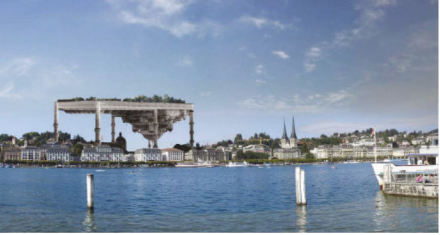
ZOB KIEL, GERMANY
PROJECT: BUS STATION, PARKING, CONFERENCE CENTER, EVENT AREA
SIZE: 38 200 M2



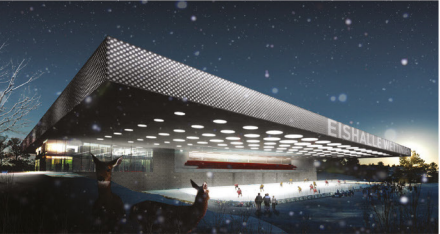
PALACE OF GLOBAL JUSTICE, BRUSSELS
PROJECT: JUSTICE PALACE, OFFICES, SERVICE FACILITIES
SIZE: 116 000 M2



MINARET, SWITZERLAND
PROJECT: REACTION TO MINARET BAN



SPORTS AND WELLNESS CENTER, WETTINGEN
PROJECT: SPORTS AND WELLNESS CENTER
SIZE: 17 500 M2



ØSTERBRO-VEJLE HAVNEPARK, DENMARK
PROJECT: HOUSING
SIZE: 12 500 M2



LA DEFENSE SEINE ARCHE, PARIS
PROJECT: MIXED-USE, OFFICE, EXHIBITION, CONFERENCE
SIZE: 13 500 M2



MARINA DA GLORIA, RIO DE JANEIRO, BRAZIL
PROJECT: COMMERCIAL, CONVENTION CENTER
SIZE: 190 000 M2



THE NORWEGIAN MINING MUSEUM, NORWAY
PROJECT: MINING MUSEUM
SIZE: 3 700 M2



RESEARCH BUILDING, ZURICH, SWITZERLAND
PROJECT: SWISS FEDERAL INSTITUTE OF TECHNOLOGY
SIZE: 10 500 M2



MACROLOT BOULOGNE, PARIS
PROJECT: OFFICE, HOUSING, SCHOOL, RETAIL
SIZE: 34 000 M2



HANGZHOU TOWER, HANGZHOU, CHINA
PROJECT: OFFICES, COMMERCIAL
SIZE: 23 600 M2



NANTES BEAUX ARTS SCHOOL, FRANCE
PROJECT: SCHOOL OF FINE ARTS
SIZE: 12 500 M2



VOLT, NORWAY
PROJECT: HIGH VOLTAGE MAST
SIZE: 45X25M



EDF PAVILION 2012 LONDON OLYMPICS
PROJECT: PAVILION
SIZE: 700 M2



VENICE 2.0
PROJECT: VISION FOR VENICE



CHEILJEDANG R&D CENTER II, INCHEON, SOUTH KOREA
PROJECT: OFFICES, LABORATORIES
SIZE: 71 500 M2



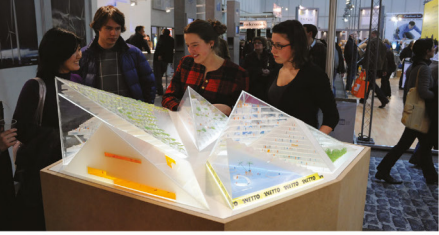
CHEILJEDANG R&D CENTER, INCHEON, SOUTH KOREA
PROJECT: LABORATORY AND OFFICES
SIZE: 71 500 M2



FAABORG HAVNEBAD, DENMARK
PROJECT: HARBOR BATH
SIZE: 21 000 M2



BATIBOUW EXHIBITION BRUSSELS
PROJECT: EXHIBITION



ARENA92 LA DEFENSE, PARIS
PROJECT: STADIUM, OFFICES, COMMERCIAL
SIZE: 109 000 M2



EMSLAND ARENA LINGEN, GERMANY
PROJECT: MULTIFUNCTION ARENA
SIZE: 13 000 M2



BEIRUT HOUSE OF ARTS AND CULTURE
PROJECT: ARTS AND CULTURE CENTER, THEATERS
SIZE: 7 800 M2



BRATISLAVA NEW CITY CENTER, SLOVAKIA
PROJECT: URBAN DEVELOPMENT, HOUSING, OFFICE, RETAIL
SIZE: 150 000 M2



HOTEL SANTA TERESA RIO, BRAZIL
PROJECT: HOTEL AND CONFERENCE CENTER
SIZE: 3 000 M2



OLYMPIC PORT, RIO, BRAZIL
PROJECT: OLYMPIC MEDIA AND SPORT HOUSING
SIZE: 700 000 M2



VDA ANATOMY FASHION SHOW, COPENHAGEN
PROJECT: INSTALLATION
SIZE: 350 M2



TILBURG SUSTAINABLE CITY STUDY, NL
PROJECT: SUSTAINABLE URBAN STUDY



SCHIZOPHRENIC HOUSE, BRATISLAVA
PROJECT: MASTERPLAN AND HOUSE TYPOLOGIES
SIZE: 500 M2



GENEVA GREEN-CHERPINES, SWITZERLAND
PROJECT: MASTERPLAN
SIZE: 570 000 M2



PALEISSTRAAT, BELGIUM
PROJECT: POLICE STATION, APARTMENTS
SIZE: 7 000 M2



MOE HOUSING COMPLEX, PARIS
PROJECT: RESIDENTIAL
SIZE: 5 500 M2



HOSPITAL SLAGELSE, DENMARK
PROJECT: PSYCHIATRIC HOSPITAL
SIZE: 44 000 M2



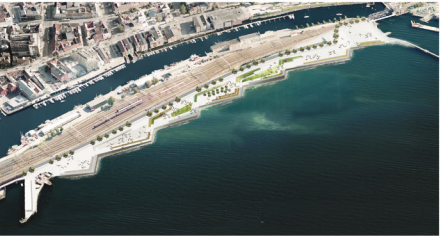
EXPERIENCING THE VOID, MOMA, NEW YORK CITY
PROJECT: SPIRAL TRAMPOLINE NET



CAIRO RETAIL CITY, EGYPT
PROJECT: SHOPPING, HOTEL, OFFICE
SIZE: 250 000 M2



FJORDPARK, TRONDHEIM, NORWAY
PROJECT: HARBORFRONT, PARK
SIZE: 23 000 M2



DOCHODO ZOOLOGICAL GARDEN, SOUTH KOREA
PROJECT: ZOOLOGICAL GARDEN ISLAND
SIZE: 43 500 000 M2



BIENNALE BELGIAN PAVILION, VENICE
PROJECT: PAVILION
SIZE: 300 M2



ENTREPOTS MACDONALD, PARIS
PROJECT: RESIDENTIAL
SIZE: 9 000 M2



SINT LUDGARDISSCHOOL, ANTWERP
PROJECT: GYMNASIUM, CAFETERIA, SCHOOL
SIZE: 5 300 M2



PUNGGOL HOUSING, SINGAPORE
PROJECT: MASTERPLAN, HIGH-RISE PUBLIC HOUSING
SIZE: 400 000 M2



THE WEAVE GARDEN CITY, GRONINGEN, NL
PROJECT: HOUSING STUDY
SIZE: 27 000 M2



FISH MARKET, BERGEN, NORWAY
PROJECT: FISH MARKET, SQUARE
SIZE: 2 000 M2



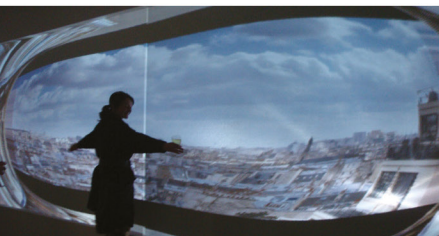
TAIPEI POP CENTER, TAIWAN
PROJECT: AUDITORIUM, OPEN THEATER, COMMERCIAL
SIZE: 80 000 M2



LEEWARDEN ART DEPOT, THE NETHERLANDS
PROJECT: ART DEPOSIT, MASTERPLAN
SIZE: 12 000 M2



LE PASSE MURAILLE, INSTALLATION, PARIS, NYC, SP
PROJECT: INTERACTIVE ART INSTALLATION



NANTES MALAKOFF HABITAT, FRANCE
PROJECT: REHABILITATION, HOUSING
SIZE: 3 000 M2



JENHA MARINA RESORT, BEIRUT, LEBANON
PROJECT: VILLAS, HOTELS, CONDOMINIUM, PARK, MARINA
SIZE: 36 000 M2



GROEP T UNIVERSITY CAMPUS, LEUVEN, BE
PROJECT: UNIVERSITY CAMPUS
SIZE: 20 000 M2



OLYMPIA KWARTIER ALMERE, NL
PROJECT: HOUSING
SIZE: 4 300 M2



VALLARTA TOWERS, MEXICO
PROJECT: COMMERCIAL, RESIDENTIAL
SIZE: 50 000 M2



Z33 ART CENTER, HASSELT, BELGIUM
PROJECT: GALLERY EXTENSION, SERVICE APARTMENTS
SIZE: 6 000 M2



BELGIAN PAVILION SHANGHAI
PROJECT: WORLD EXPO PAVILION
SIZE: 5 000 M2



AMA HEADQUARTERS MASTERPLAN, ROME
PROJECT: OFFICE, HOUSING, MASTERPLAN
SIZE: 17 200 M2



SUNDSVALL ARTS & THEATRE CENTER, SWEDEN
PROJECT: THEATER, ARTS CENTER
SIZE: 12 000 M2



ARGENTINA 2010 BICENTENARIO, BUENOS AIRES
PROJECT: BICENTENNIAL CITY LANDMARK
SIZE: 250 000 M2



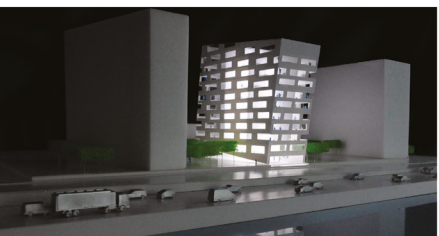
ATHENEE PHILIPPEVILLE, BELGIUM
PROJECT: SCHOOL
SIZE: 10 000 M2



LAND VAN LUIK STRAAT, BRUSSELS
PROJECT: HOUSING



BAVIERE TOWER, LIEGE, BELGIUM
PROJECT: RESIDENTIAL
SIZE: 4 000 M2



IMEC TOWER, LEUVEN, BELGIUM
PROJECT: OFFICE, LABORATORIES, PUBLIC FUNCTIONS
SIZE: 12 000 M2



RIMINI SEASCAPE, ITALY
PROJECT: HOTEL, COMMERCIAL, ARENA, PARKING
SIZE: 72 000 M2



BIG BROTHER HOUSE, ORDOS, CHINA
PROJECT: RESIDENTIAL
SIZE: 1 000 M2



MAISON DU DANEMARK, PARIS
PROJECT: OFFICE & LECTURE HALL CONVERSION
SIZE: 200 M2



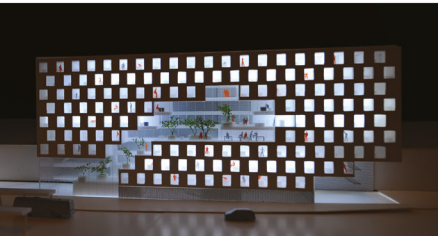
AGUATEKTUR WORKSHOP
PROJECT: PRODUCT DESIGN



TWO SEASONS HOTEL, STAVANGER, NORWAY
PROJECT: HOTEL
SIZE: 8 500 M2



RESIDENCE ETUDIANTE, PARIS
PROJECT: STUDENT HOUSING, APARTMENTS
SIZE: 7 000 M2



NOVARA HOSPITAL, ITALY
PROJECT: HOSPITAL
SIZE: 143 000 M2



KATHARINENQUARTIER HAMBURG, GERMANY
PROJECT: OFFICE, HOUSING
SIZE: 22 000 M2



COMA, COPENHAGEN-MALMØ REGION
PROJECT: VISION

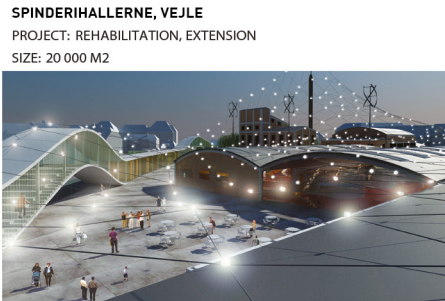
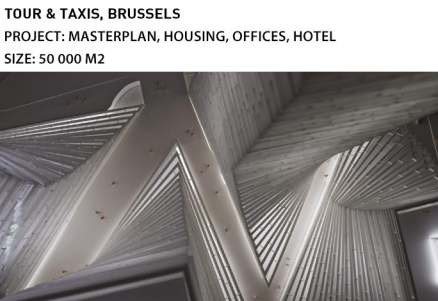
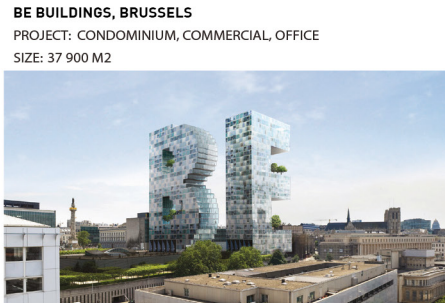
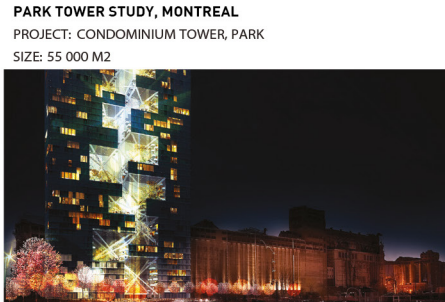
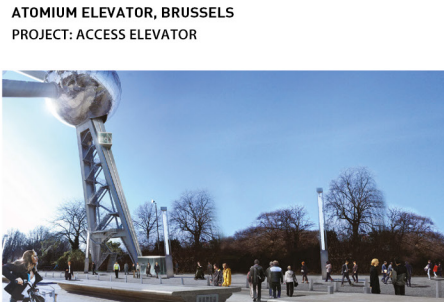
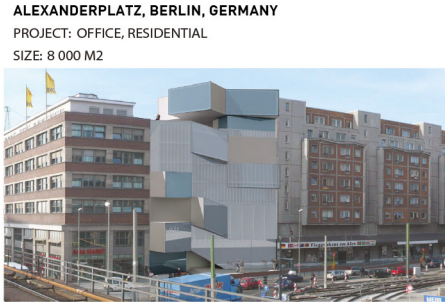
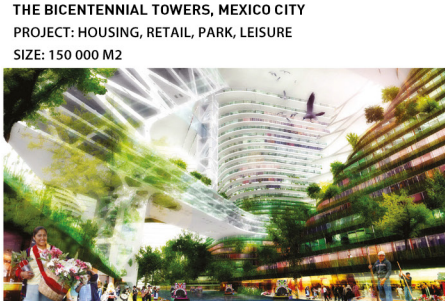
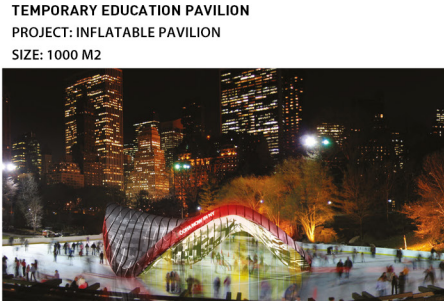


ERACLEA, ITALY
PROJECT: PARK, HOUSING, GOLF COURSE
SIZE: 2 270 000 M2

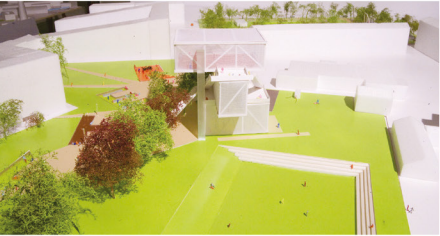


MOUNTAIN DWELLINGS, COPENHAGEN
PROJECT: RESIDENTIAL, OFFICES, RETAIL, PARKING
SIZE: 33 000 M2





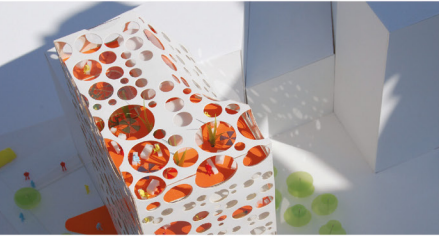
NY KVARTER PARK NORD VEST, COPENHAGEN
PROJECT: LANDSCAPE, PUBLIC SPACE, SPORT FACILITIES
SIZE: 35 000 M2



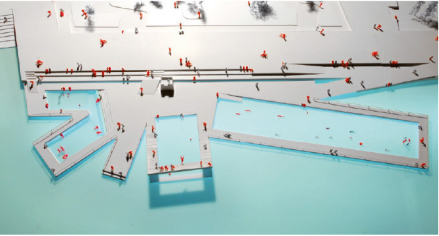
WEDEKINDSTRASSE BERLIN, GERMANY
PROJECT: ROOFTOP EXTENSION
SIZE: 10 000 M2



MBX STUDENT HOUSING, PARIS
PROJECT: STUDENT HOUSING COMPLEX
SIZE: 3 050 M2



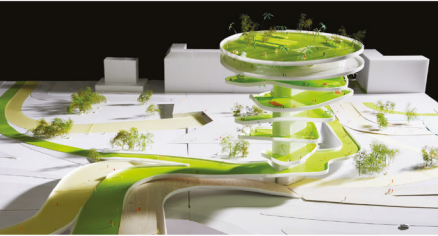
AALBORG HAVNEFRONT HAVNEBAD
PROJECT: AALBORG HARBOUR BATH
SIZE: 1 000 M2



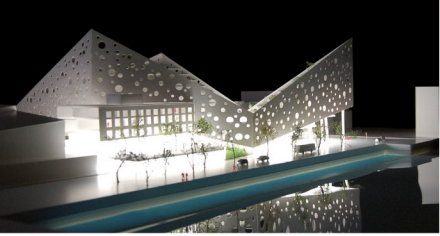
SHENZHEN LOGISTIC CITY
PROJECT: MIXED USE, RESIDENTIAL, OFFICES,
SIZE: 2 200 000 M2



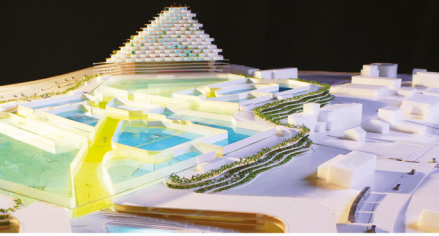
ZARAGOZA PARK, SPAIN
PROJECT: PUBLIC PARK
SIZE: 195 000 M2



THE CROWN HOTEL, BRATTORA, NORWAY
PROJECT: HOTEL, CONFERENCE, CENTER
SIZE: 40 000 M2



KVADRAT SHOPPING MALL, SANDNES, NORWAY
PROJECT: COMMERCIAL
SIZE: 150 000 M2



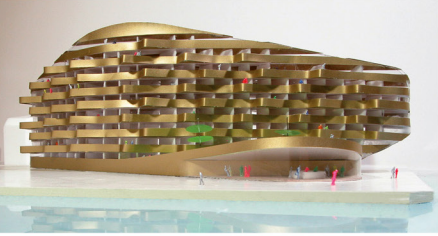
MEJLGADE INFILL, AARHUS, GERMANY
PROJECT: OFFICE, STUDIO INFILL
SIZE: 250 M2



NORVEGIAN WOOD, SANDNES
PROJECT: PUBLIC FACILITY



KRØYERSPLADS, COPENHAGEN, DENMARK
PROJECT: HOUSING
SIZE: 15 000 M2



ORDRUP KULTURCENTRUM, DENMARK
PROJECT: CULTURE CENTER, SPORTS CENTER, RESEARCH



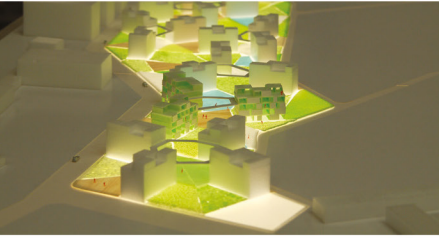
TRØJBORG BENT TOWER
PROJECT: HOUSING
SIZE: 640 M2



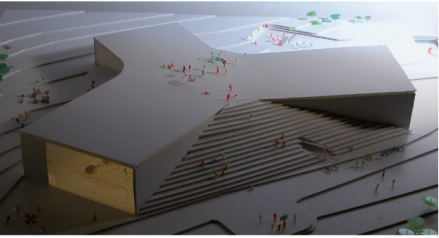
CULTURE SQUARE, LINDESNES, NORWAY
PROJECT: SQUARE
SIZE: 1 500 M2



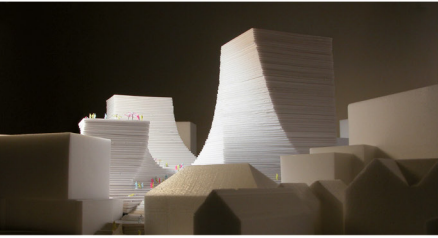
BETTER CHEAPER HOUSING 3, DENMARK
PROJECT: MASTERPLAN



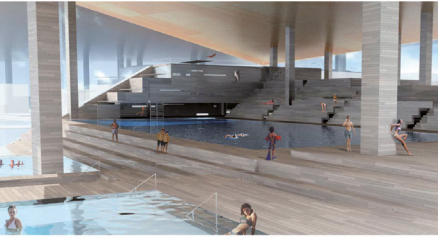
MULTIHALLER I ASSENS
PROJECT: MULTIMEDIA CENTER
SIZE: 4 760 M2



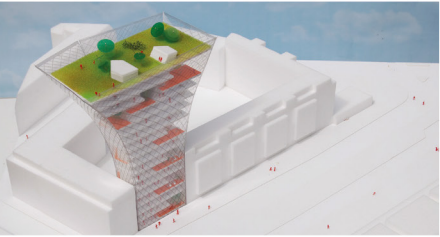
STAVANGER POST OFFICE
PROJECT: HOTEL, SHOPPING, CONFERENCE CENTER
SIZE: 27 000 M2



KRISTIANSAND POOL, NORWAY
PROJECT: SWIMMING POOL



ALEXANDERPLATZ BERLIN
PROJECT: COMMERCIAL, RETAIL
SIZE: 8 100 M2



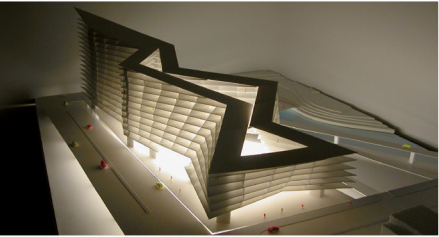
GYNGEN, AARHUS, DENMARK
PROJECT: COMMERCIAL, RETAIL, CULTURE
SIZE: 1 000 M2



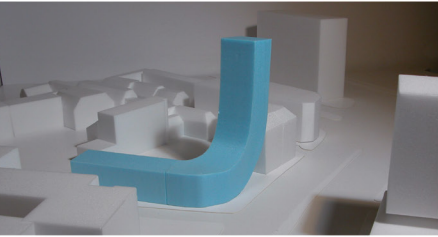
FREYSSINET, PARIS, FRANCE
PROJECT: OFFICE, HOTEL, RETAIL
SIZE: 16 000 M2



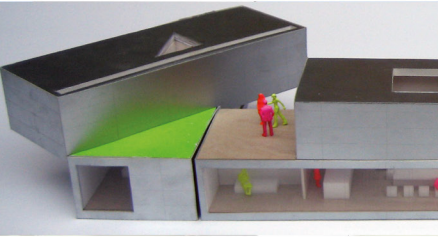
FIRST HOTEL STOCKHOLM, SWEDEN
PROJECT: HOTEL
SIZE: 1 000 BEDROOMS



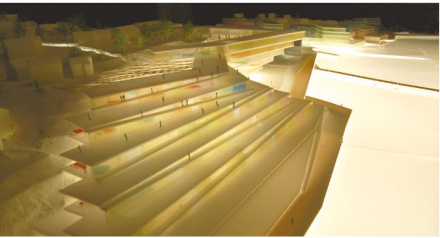
EUROPA PLADS, AARHUS, DENMARK
PROJECT: HOUSING



RUUKKI TYPEHOUSE
PROJECT: HOUSING SYSTEM
SIZE: VARIOUS



ARENDAL KNOWLEDGE HARBOUR, NORWAY
PROJECT: URBAN PLANNING, RESIDENTIAL DEVELOPMENT, OFFICES
SIZE: 79 000 M2



PAKHUS 13 AARHUS
PROJECT: WAREHOUSE CONVERSION
SIZE: 18 000 M2



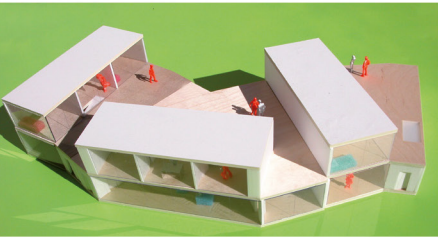
LANDSKRONA MASTERPLAN, SWEDEN
PROJECT: MASTERPLAN



NY TØJHUS NJALSGADE, COPENHAGEN
PROJECT: RETAIL HOUSING
SIZE: 19 000 M2



DRAGON TYPEHOUSES, CHINA
PROJECT: RESIDENTIAL HOUSING SYSTEM



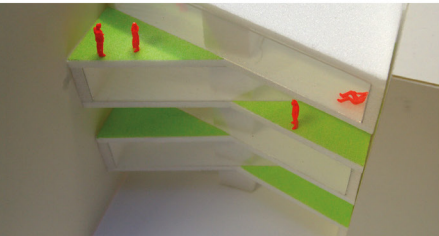
TIVOLI RETAIL SHOP, COPENHAGEN, DENMARK
PROJECT: RETAIL
SIZE: 1 000 M2



KAISERKORSO, BERLIN
PROJECT: HOUSING
SIZE: 640 M2



MANTEUFELSTRASSE, BERLIN
PROJECT: RESIDENTIAL
SIZE: 800 M2



MAISON DU DANEMARK, PARIS
PROJECT: INTERIOR DESIGN, PERMANENT INSTALLATION
SIZE: 100 M2



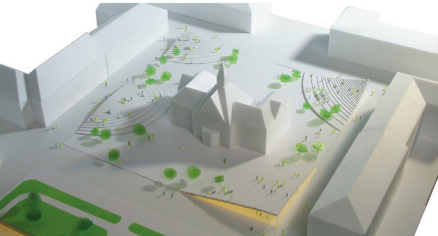
KLØVERKARRÉEN, COPENHAGEN, DENMARK
PROJECT: HOUSING
SIZE: 5 000 UNITS



NYT AKTIVITETSHUS, DENMARK
PROJECT: NEW ACTIVITY CENTER



UMEÅ KUNGSGATAN, SWEDEN
PROJECT: PUBLIC SPACE, URBAN PLANNING



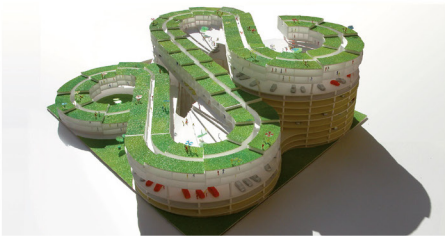
CRUSHED BOWLS
PROJECT: PRODUCT DESIGN



RESIDENTIAL VIADUCT, AALBORG, DENMARK
PROJECT: HOUSING, PARKING
SIZE: 120 000 M2



MOTOR CITY, COPENHAGEN
PROJECT: PARKING, SHOWROOM, HOUSING
SIZE: 65 000 M2



ARCTIC CULTURE CENTER, HAMMERFEST, NORWAY
PROJECT: CULTURAL CENTER
SIZE: 3 000 M2



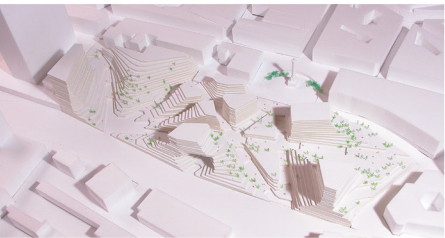
HOLBÆK MARRIOTT HOTEL, DENMARK
PROJECT: HOTEL
SIZE: 11 000 M2



HOUSING ØRESTAD, DENMARK
PROJECT: HOUSING



CITÉ ADMINISTRATIVE, BRUSSELS
PROJECT: URBAN PLANNING



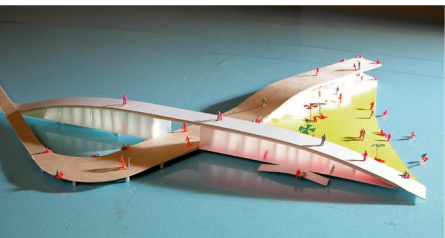
HYSOCIETY, ZERO ENERGY BILL, DK
PROJECT: RESEARCH
SIZE: 100 000 M2



NORDATLANTENS BRYGGE, COPENHAGEN
PROJECT: CULTURAL CENTER, SPORTS CENTER, RESEARCH



VORDINGBORG BATHS, DENMARK
PROJECT: HARBOR BATH AND BEACH



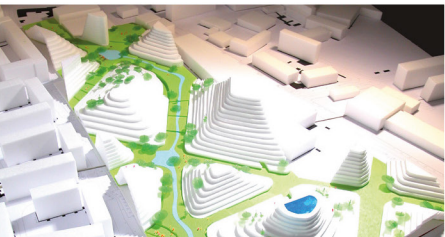
THE 'GANG' SCHOOL, COPENHAGEN
PROJECT: COMMUNITY BUILDING, SCHOOL, RECORDING STUDIO
SIZE: 3 000 M2



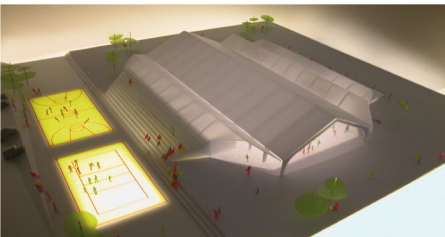
HUSET PÅ CHRISTIANSHAVN, COPENHAGEN
PROJECT: HOUSING



URBAN SPACE FOR TV SHOW
PROJECT: MASTERPLAN, URBAN PLANNING



HELHAL, DENMARK
PROJECT: REHABILITATION CENTER

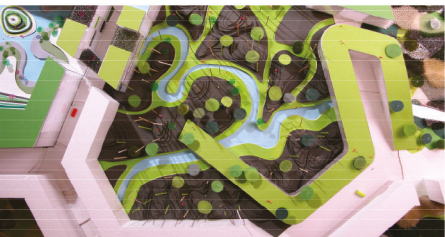


BENCH

PROJECT: PROGRAMMED BENCH DESIGN
SIZE: 125 M LONG



ØERESTAD SOUTH
PROJECT: URBAN PLANNING & LANDSCAPE



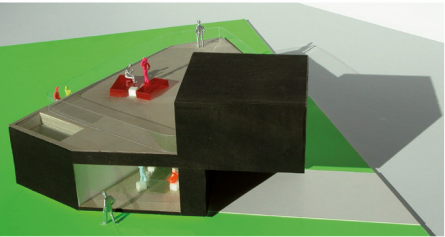
UMEÅ HOTEL, SWEDEN
PROJECT: HOTEL AND CONFERENCE CENTER
SIZE: 25 000 M2



BIRKEGADE ROOFTOP PENTHOUSE, COPENHAGEN
PROJECT: PENTHOUSES, ROOFTOP TERRACES
SIZE: 900 M2



M2 TYPEHOUSE
PROJECT: TYPEHOUSE
SIZE: 140-300 M2

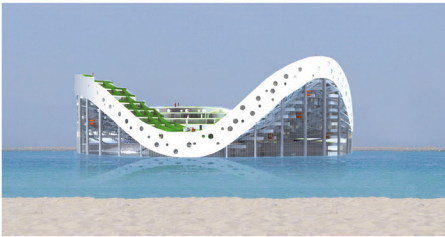


OUTDOOR LIGHTING
PROJECT: PUBLIC FURNITURE

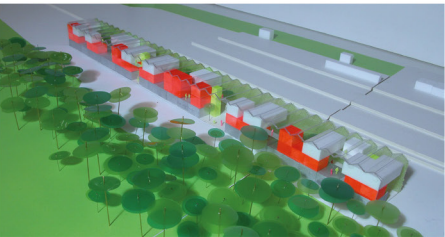


MERMAID

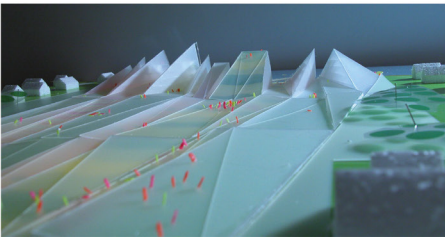
PROJECT: WELLNESS CENTER
SIZE: 50 000 M2



CENTER FOR REHABILITATION OF HOMELESS
PROJECT: REHABILITATION CENTER



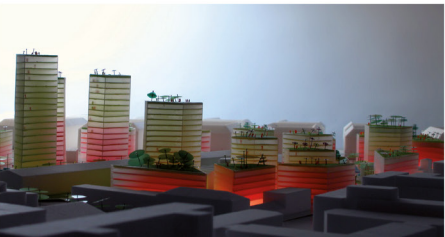
KONGEVEJENS STADION, DENMARK
PROJECT: STADIUM



PERFORMING ARTS CENTER, LIMERICK
PROJECT: PERFORMING ARTS CENTER



NEW VALBY, COPENHAGEN
PROJECT: MASTERPLAN



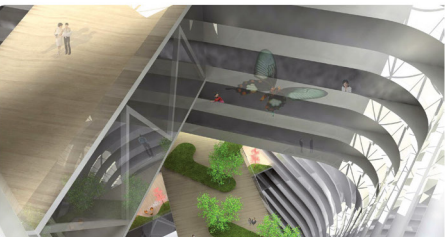
WATERCULTURE HOUSE ODENSE, DENMARK
PROJECT: SWIMMING POOL
SIZE: 5 000 M2



KALVEBOD OFFICES, COPENHAGEN
PROJECT: OFFICES, RETAIL
SIZE: 21 000 M2



EUROPEAN PATENT OFFICE, THE HAGUE, NL
PROJECT: OFFICES
SIZE: 80 000 M2



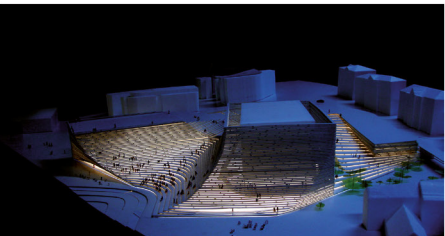
BRUUNS BAZAAR ARHUS, STOCKHOLM, OSLO, COPENHAGEN
PROJECT: FLAGSHIP, CONCESSION STORES
SIZE: 40 M2 - 300 M2



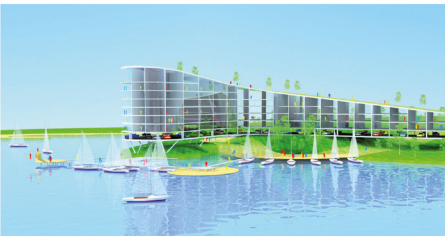
TIVOLI CONCERT HOUSE, COPENHAGEN
PROJECT: CONCERT HALL



STAVANGER CONCERT HOUSE, NORWAY
PROJECT: CONCERT HALL
SIZE: 1 800 M2



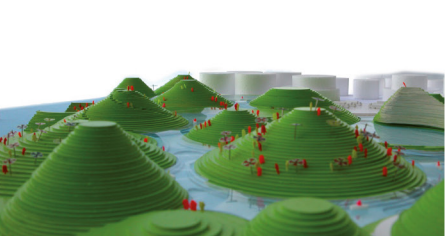
STAVANGER HOUSING, NORWAY
PROJECT: HOUSING



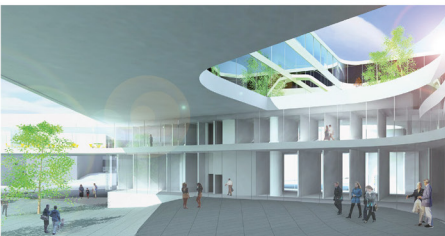
BOATHOUSE HARBOR, FAKSE, DENMARK
PROJECT: HOUSE BOATS, MARINA



WHITE WATER ADVENTURE PARK, COPENHAGEN
PROJECT: WATERPARK

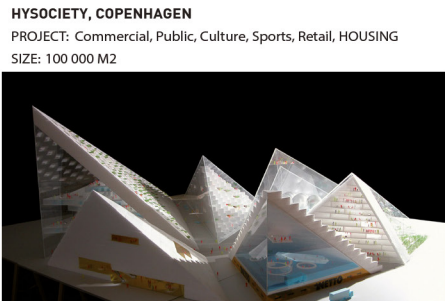
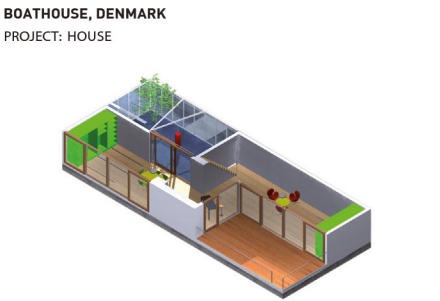
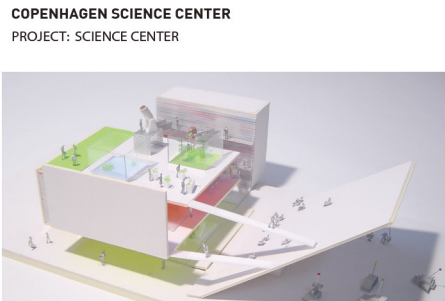
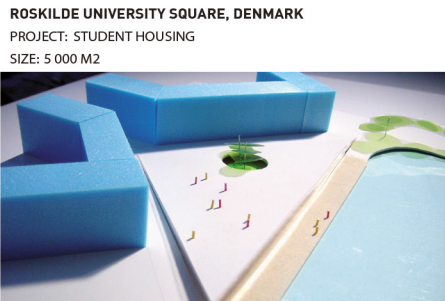
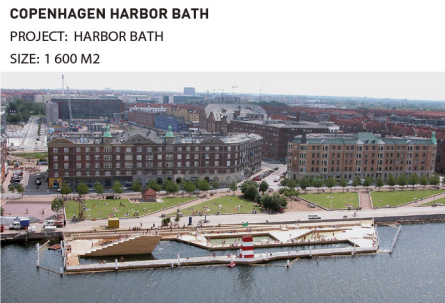
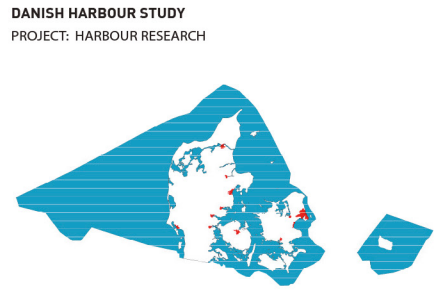
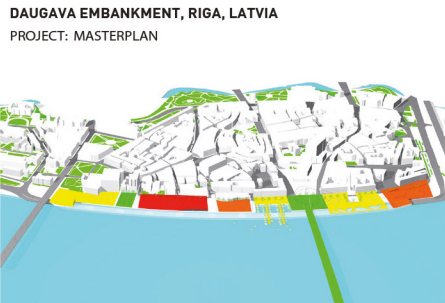
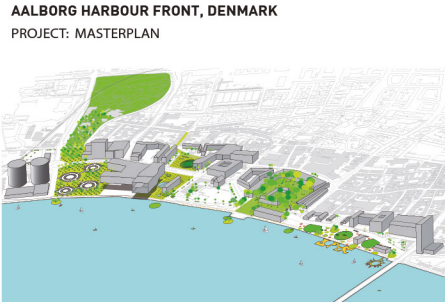
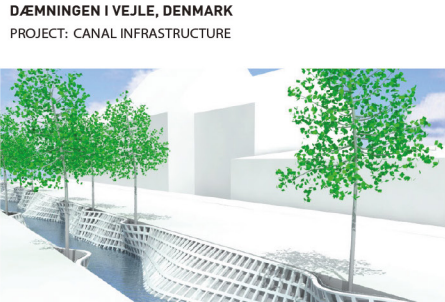
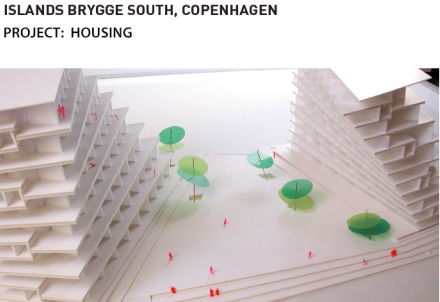
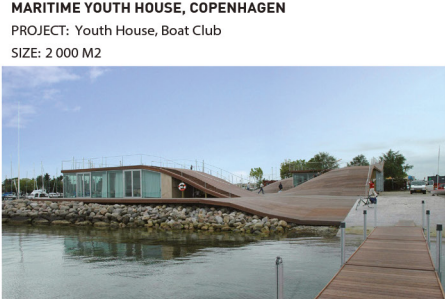
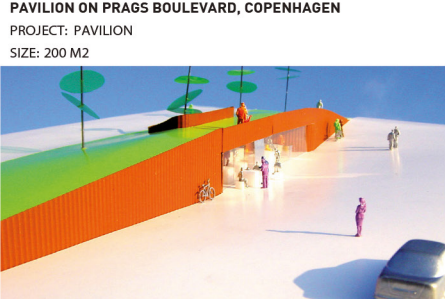
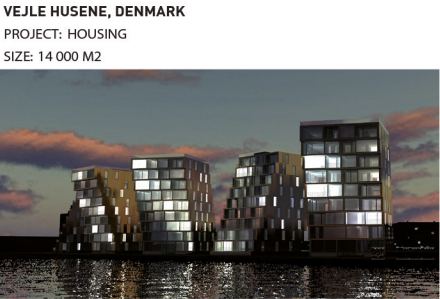


PSYCHIATRIC HOSPITAL, TRONDHEIM, NORWAY
PROJECT: PSYCHIATRIC HOSPITAL
SIZE: 25 000 M2



AALBORG UNIVERSITET FIBIGEROMRÅDET, AALBORG
PROJECT: UNIVERSITY





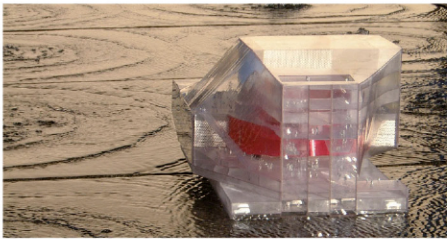
DREJENS EXTENSION, DENMARK
PROJECT: MASTERPLAN



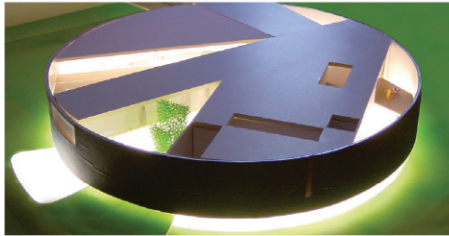
THE NEW SUBURBS, TILST, DENMARK
PROJECT: MASTERPLAN



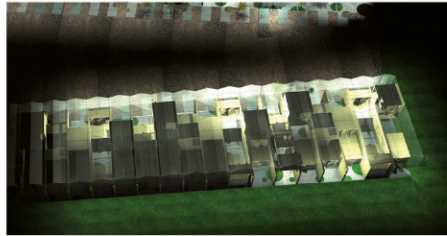
ROYAL DANISH THEATER, COPENHAGEN, DK
PROJECT: THEATER



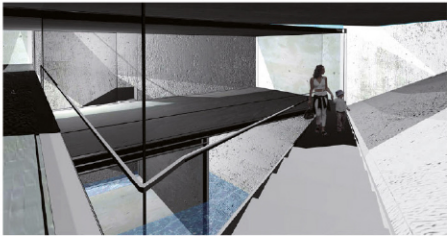
THE AQUA CENTER, AALBORG, DENMARK
PROJECT: SWIMMING POOL, THERMAL BATH
SIZE: 5 000 M2



BETTER CHEAPER HOUSING, DENMARK
PROJECT: HOUSING



MONS KLINT GEOLOGICAL CENTER, DENMARK
PROJECT: GEOLOGICAL CENTER
SIZE: 3 000 M2



SHORTCUT, THE MOVIE
PROJECT: MOVIE



JDSA / Julien De Smedt Architects is a
multidisciplinary office that focuses on
architecture, from urban furniture to large scale
planning. We aim at rethinking established ideas to
focus on the world as it evolves today.
We look at the past and the present to shape
the future. Our projects are manifestos in the
making of contemporary society.

**Julien De Smedt
Architects**

JDSA.EU